



OFF-THE-ROAD TIRES

GOODYEAR
MORE DRIVEN.











ROCK STEADY

2014 GOODYEAR® OFF-THE-ROAD TIRE GUIDE

THE STRENGTH TO MOVE MOUNTAINS

Tough Goodyear OTR tires can help you increase the efficiency of your operations from the ground up. Choosing tires that offer consistent traction helps your fleets get more work done in the same time. Superb puncture resistance and long treadwear help keep your cost of operation low.

RL-4D	RL-4H	RL-4J	RL-4K	RL-4M+	RL-5K	RL-5S	RM-3A	RM-4A+	RM-4B+	RT-3B	RT-4A+	RT-5C	SGLD L2A	SMO D/L-5B	SMO-5A	SMO-5C	SMO-5D	SRB-7A	TL-3A+	UMS-3A	UMS-3B	WRL-3A	XTR-3C	XTRWL	
•	•		•			•	•	•		•															 HAULAGE
•				•	•								•	•	•	•			•	•	•	•	•		 UNDERGROUND MINING
•		•		•	•				•		•								•						 LOADER
•																			•						 ARTICULATED DUMP TRUCK
									•										•						 SCRAPER
												•					•		•			•			 INDUSTRY HANDLING

HAULAGE TRUCK TIRES

Goodyear® radial and bias haulage truck tires help keep your equipment operating at capacity. Whether you're facing extreme terrains mining quarries or hauling heavy loads through construction sites, Goodyear has a wide selection of haulage tires to help you manage your throughput.

HAULAGE RADIAL TIRES FOR TOUGHNESS AND EFFICIENCY

- Strong, reinforced sidewalls help resist cuts on tough terrain
- Steel-belted construction promotes good retreadability
- Low rolling resistance for enhanced fuel economy

HAULAGE BIAS TIRES FOR HEAVY-DUTY LOADS

- Thick sidewalls and undertread help resist damage from punctures
- Toughness offers confidence for enhanced operator productivity
- Nylon casing construction helps provide better wear and longevity



HAULAGE TRUCK APPLICATION

Choose the Goodyear tire that offers speed, cut resistance and traction for your job.

OPERATING SPEED



RM-4A+



RM-4B+



RL-4M+



RL-4J



RL-3+



RM-3A



RL-3J



RL-4B



RL-4H

TRACTION

CUT RESISTANCE

RL-3J

SMOOTH-RIDING, MULTI-PURPOSE, RADIAL TIRE FOR HIGH SPEED APPLICATION IN MODERATE TO SEVERE UNDERFOOT CONDITIONS



- Centerline zigzag groove for high-torque applications and superior lateral traction
- Tapered shoulder lugs help provide excellent forward traction and self-cleaning
- 100-Level tread depth helps provide a cool-running, value tire with good fuel economy
- Radial construction for better fuel economy, softer ride and improved treadwear
- High-tensile steel belt package for enhanced impact resistance

Rim	Bias/Radial	Tire Size	Comp	Index LR	TT/TL	Ind Code	Product Code	Material ID	Non/Skid	Weight	Rim Width & Flange
35	Radial	3325R35	4S	2X	TL	E3	136096747	5312	53	2235	27.00-3.5
35	Radial	3725R35	4S	2X	TL	E3	136751747	5331	60	2866	31.00-4.0
35	Radial	3725R35	6S	2X	TL	E3	136751289	5329	60	2881	31.00-4.0
39	Radial	375R39	4S	2X	TL	E3	136099747	5320	58	3226	32.00-4.5
51	Radial	3300R51	2S	2X	TL	E3	154070746	159713	63	4125	24.00-5.0
51	Radial	3300R51	3S	2X	TL	E3	154070751	189256	63	4360	24.00-5.0
51	Radial	3300R51	4S	2X	TL	E3	154070747	159709		4131	24.00-5.0

RM-3A

THE RM-3A IS A GOODYEAR® HAULAGE TIRE FOR HIGH-SPEED SERVICE THAT OFFERS OUTSTANDING DURABILITY AND PERFORMANCE



- Cool-running, shallow tread, haulage tire for long haul, high-speed service
- A sidewall scallop helps reduce temperature buildup for longer treadwear
- A high-angle, non-directional tread pattern offers a higher MPH rating for improved overall performance
- Interlocking stability blading helps provide forward and backward traction
- High net-to-gross tread pattern helps improve footprint stability and offers additional heat relief than the E4
- Unique compound places more wearable tread on the ground

Rim	Bias/Radial	Tire Size	Comp	Index LR	TT/TL	Ind Code	Product Code	Material ID	Non/Skid	Weight	Rim Width & Flange
63	Radial	53/80R63	2SL	2X	TL	E3	154157500	218145	80	10055	36.00-5.0
63	Radial	53/80R63	3SL	2X	TL	E3	154157506	218127	80	10055	36.00-5.0
63	Radial	53/80R63	4SL	2X	TL	E3	154157531	218151	80	10062	36.00-5.0
63	Radial	59/80R63	2SL	2X	TL	E3	154154500	215557	89	11475	44.00-5.0
63	Radial	59/80R63	3SL	2X	TL	E3	154154506	218138	89	11475	44.00-5.0
63	Radial	59/80R63	4SL	2X	TL	E3	154154531	218142	89	11435	44.00-5.0

RL-3+

125-LEVEL RADIAL ROCK TIRE FOR HIGH-SPEED HAULAGE APPLICATIONS



- Solid centerline section for high-torque applications, longer wear and smooth ride
- 125-level tread depth (25% deeper than standard E-3) offers long wear, greater cut resistance and enhanced traction
- Unique compound helps provide cooler temperatures for long haul, high-speed service

Rim	Bias/Radial	Tire Size	Comp	Index LR	TT/TL	Ind Code	Product Code	Material ID	Non/Skid	Weight	Rim Width & Flange
25	Radial	1600R25	4S	2X	TL	E3	155023447	6261	50	661	11.25-2.0
33	Radial	1800R33	6S	3X	TL	E3	153037507	217212	53	1126	13.00-2.5
33	Radial	1800R33	2S	2X	TL	E3	153032446	6129	53	992	13.00-2.5
33	Radial	1800R33	4S	2X	TL	E3	153032447	6131	53	978	13.00-2.5
35	Radial	2400R35	2S	2X	TL	E3	136051446	5160	60	1619	17.00-3.5
35	Radial	2400R35	4S	3X	TL	E3	136051447	5162	60	1619	17.00-3.5

RT-4A+

150-LEVEL RADIAL HAULAGE TIRE WITH A DEEP TREAD PATTERN FOR OUTSTANDING TRACTION AND LONG, EVEN WEAR



- 150-level tread depth offers optimized traction and treadwear
- Unique geometry lug pattern offers even pressure distribution and increased mobility
- Rugged tread design offers long, even wear
- Buttressed shoulder lugs help provide self cleaning and help resist sidewall cutting
- Radial construction offers improved treadwear and cooler temperatures
- High-tensile steel belt package offers enhanced impact and cut resistance

Rim	Bias/Radial	Tire Size	Comp	Index LR	TT/TL	Ind Code	Product Code	Material ID	Non/Skid	Weight	Rim Width & Flange
33	Radial	1800R33	2S	2X		E4	153032126	157042		1004	13.00-2.5
33	Radial	1800R33	4S	2X	TL	E4	153032129	157044	68	1005	13.00-2.5
33	Radial	1800R33	6S	2X	TL	E4	153032135	157047	68	1010	13.00-2.5
35	Radial	2400R35	2H	2X	TL	E4	136047675	223296	90	1677	17.00-3.5
35	Radial	2400R35	4H	2X	TL	E4	136047677	223298	87	1721	17.00-3.5
35	Radial	2400R35	6H	2X	TL	E4	136047676	223297	90	1730	17.00-3.5
49	Radial	2700R49	4S	2X	TL	E4	136061134	169761	92	3003	19.5-4.0

RM-4A+

THE RM-4A+ IS THE NEXT GENERATION OF GOODYEAR® HAULAGE TIRES OFFERING TOUGHNESS AND PERFORMANCE FOR SEVERE OPERATING CONDITIONS



- Extra-deep tread pattern helps provide longer treadwear
- A sidewall scallop offers reduced temperature buildup and allows for a higher TMPH rating for improved overall performance
- A high-angle, non-directional tread pattern helps provide forward and backward traction
- Interlocking stability blading helps improve footprint stability and offers additional heat relief
- High net-to-gross tread pattern places more wearable tread on the ground

Rim	Bias/Radial	Tire Size	Comp	Index LR	TT/TL	Ind Code	Product Code	Material ID	Non/Skid	Weight	Rim Width & Flange
49	Radial	2700R49	2SL	2X	TL	E4	136061468	216123	95	3038	19.5-4.0
49	Radial	2700R49	3SL	2X	TL	E4	136061495	216124	95	3038	19.5-4.0
49	Radial	2700R49	4SL	2X	TL	E4	136061496	216125	95	3038	19.5-4.0
49	Radial	2700R49	6SL	2X	TL	E4	136061528	217773	95	3038	19.5-4.0
51	Radial	3300R51	2SL	3X	TL	E4	154018468	217704	110	5138	24.00-5.0
51	Radial	3300R51	3SL	3X	TL	E4	154018495	217764	110	5138	24.00-5.0
51	Radial	3300R51	4SL	3X	TL	E4	154018496	217706	110	5138	24.00-5.0
57	Radial	3700R57	4SL	2X	TL	E4	154079496	216131		7427	27.00-6.0
57	Radial	3700R57	2SL	2X	TL	E4	154019468	219839	124	7427	27.00-6.0
57	Radial	3700R57	3SL	2X	TL	E4	154019495	219838	124	7427	27.00-6.0
57	Radial	3700R57	4SL	2X	TL	E4	154019496	219837	124	7437	27.00-6.0
57	Radial	46/90R57	2SL	2X	TL	E4	154152774	215960	122	8209	32.00-6.0
57	Radial	46/90R57	3SL	2X	TL	E4	154152773	215959	122	8209	32.00-6.0
57	Radial	46/90R57	4SL	2X	TL	E4	154152775	216021	122	8219	32.00-6.0
63	Radial	53/80R63	2SL	2X	TL	E4	154157468	218106	132	10981	36.00-5.0
63	Radial	53/80R63	3SL	2X	TL	E4	154157495	218109	132	10981	36.00-5.0
63	Radial	53/80R63	4SL	2X	TL	E4	154157496	218192	132	10994	36.00-5.0
63	Radial	59/80R63	2SL	2X	TL	E4	154154468	218181	145	12465	44.00-5.0
63	Radial	59/80R63	3SL	2X	TL	E4	154154495	218184	145	12465	44.00-5.0
63	Radial	59/80R63	4SL	2X	TL	E4	154154496	218187	145	12480	44.00-5.0

RM-4B+

THE RM-4B+ IS GOODYEAR'S NEWEST HAULAGE TIRE FOR SEVERE OPERATING CONDITIONS



- Optimal tread zone stiffness for improved treadwear
- Extra deep tread pattern (124/32nds)
- Cool-running CycleMax tread rubber compound
- Tread lug blading for additional heat resistance
- Interlocking blading for added stability
- Centerline channel for added lateral traction and heat resistance
- Angled main grooves for forward and lateral traction
- Sidewall scallop for improved heat resistance

Rim	Bias/Radial	Tire Size	Comp	Index LR	TT/TL	Ind Code	Product Code	Material ID	Non/Skid	Weight	Rim Width & Flange
57	Radial	4000R57	2SL	2X	TL	E4	154052680	223892		8249	29.00-6.0
57	Radial	4000R57	3SL	2X	TL	E4	154052681	223893		8249	29.00-6.0

RL-4M+

THE RL-4M+ IS FOR HAULAGE USE IN SEVERE OPERATING CONDITIONS



- 150-plus-level tread design with non-directional tread pattern offers optimized treadwear and improved forward and lateral traction
- Rugged tread design and submerged center rib help improve treadwear
- Wider tread footprints help provide improved wear rate, cut resistance and durability
- Radial construction offers cooler running temperatures

Rim	Bias/Radial	Tire Size	Comp	Index LR	TT/TL	Ind Code	Product Code	Material ID	Non/Skid	Weight	Rim Width & Flange
57	Radial	3700R57	2SL	2X	TL	E4	154081113	182020	124	7444	27.00-6.0
57	Radial	3700R57	3SL	2X	TL	E4	154081155	186816	124	7449	27.00-6.0
57	Radial	3700R57	4SL	2X	TL	E4	154081112	182017	124	7454	27.00-6.0

RL-4J

150-LEVEL RADIAL ROCK TIRE WITH LONG TREAD LIFE AND GOOD TRACTION



- Submerged centerline zigzag groove for high-torque applications and superior lateral traction
- Tapered shoulder lugs help provide excellent forward traction and self-cleaning
- 150-level tread depth offers 50% deeper tread than standard E-3 for long wear
- Unique compound offers cooler running temperatures for long haul, high-speed service
- Radial construction offers better fuel economy, softer ride and improved treadwear
- High-tensile steel belt package offers enhanced impact resistance

Rim	Bias/Radial	Tire Size	Comp	Index LR	TT/TL	Ind Code	Product Code	Material ID	Non/Skid	Weight	Rim Width & Flange
24	Radial	1200R24NHS	4S	3X	TT	E4	152393291	6067	37	314	8.50
24	Radial	1400R24NHS	4S	3X	TT	E4	152714291	6098	48	495	10.00W
25	Radial	1400R25NHS	2S	3X	TL	E4	152711536	126669	48	450	10.00
25	Radial	1400R25NHS	4S	3X	TL	E4	152711292	6088	48	486	10.00
25	Radial	1800R25	4S	2X	TL	E4	153028741	6119	68	777	13.00-2.5
25	Radial	1800R25	6S	2X	TL	E4	153028748	6121	68	782	13.00-2.5
33	Radial	1800R33	4S	2X	TL	E4	153032741	6137	68	1015	13.00-2.5
35	Radial	2100R35	2S	2X	TL	E4	136039536	5143	68	1364	15.00-3.0
35	Radial	2100R35	6S	2X	TL	E4	136039748	5153	68	1376	15.00-3.0
35	Radial	2400R35	2S	2X	TL	E4	136051098	172861	71	1691	17.00-3.5
35	Radial	2400R35	4H	2X	TL	E4	136047679	223265	72	1693	17.00-3.5
35	Radial	2400R35	4S	2X	TL	E4	136051741	5173	72	1693	17.00-3.5
35	Radial	2400R35	6H	2X	TL	E4	136047678	223264	71	1721	17.00-3.5
49	Radial	2700R49	4S	2X	TL	E4	136061741	5213	81	2947	19.5-4.0

RL-4B

TIME-PROVEN BIAS TIRE FOR UTILITY HAULAGE APPLICATIONS



- Wide, flat tread radius offers longer, even tread life
- Solid centerline section for high-torque applications offers longer wear and a smooth ride
- 150-level tread depth with 50% deeper tread than standard E-3 helps provide long wear
- Tire available in multiple tread compounds – Type 2 for long, high-speed applications, Type 3 for intermittent high-speed applications, Type 4 for standard haulage applications and Type 6 for abrasion resistance
- Radial construction offers better fuel economy, softer ride and improved treadwear
- High-tensile steel belt package offers enhanced impact resistance

Rim	Bias/Radial	Tire Size	Comp	Index LR	TT/TL	Ind Code	Product Code	Material ID	Non/Skid	Weight	Rim Width & Flange
33	Radial	1800R33	4S	2X	TL	E4	153032010	144106	69	970	13.00-2.5
33	Radial	1800R33	6S	2X	TL	E4	153032011	144109	69	975	13.00-2.5
33	Radial	1800R33	4S	3X	TL	E4	153033010	204593	69	985	13.00-2.5
33	Radial	1800R33	6S	3X	TL	E4	153042654	221027	69	985	13.00-2.5
33	Radial	2100R33	4S	2X	TL	E4	136731010	154812	68	1290	15.00-3.0
33	Radial	2100R33	6S	2X	TL	E4	136731011	154816	68	1301	15.00-3.0
35	Radial	2100R35	4S	2X	TL	E4	136039010	144112	69	1274	15.00-3.0
35	Radial	2400R35	4S	2X	TL	E4	136051010	144118	73	1686	17.00-3.5
49	Radial	2700R49	2S	2X	TL	E4	136061009	144130	81	2911	19.5-4.0
49	Radial	2700R49	4S	2X	TL	E4	136061010	144124	81	2915	19.5-4.0
57	Radial	4000R57	4SL	2X	TL	E4	154110107	185024	108	7974	29.00-6.0
57	Radial	4000R57	2SL	2X	TL	E4	154110072	174054	108	7965	29.00-6.0
57	Radial	4000R57	3SL	2X	TL	E4	154110064	174052	108	7969	29.00-6.0
57	Radial	46/90R57	2S	2X	TL	E4	154152072	175471	108	8148	32.00-6.0
57	Radial	46/90R57	3S	2X	TL	E4	154152064	177393	108	8152	32.00-6.0
57	Radial	46/90R57	4S	2X	TL	E4	154152107	181293	108	8157	32.00-6.0

RL-4H

150-LEVEL RADIAL ROCK TIRE WITH LONG, EVEN WEAR HAVING A FLAT TREAD DESIGN FOR OPTIMIZED FOOTPRINT AND LOAD DISTRIBUTION



- Solid centerline section for high-torque applications, longer wear and smooth ride
- 150-level tread depth offers 50% deeper tread than standard E-3 for long wear
- Tire available in multiple tread compounds – Type 2 for long, high-speed applications, Type 3 for intermittent high-speed applications, Type 4 for standard haulage applications and Type 6 for abrasion resistance
- Radial construction offers better fuel economy, softer ride and improved treadwear
- High-tensile steel belt package offers enhanced impact resistance

Rim	Bias/Radial	Tire Size	Comp	Index LR	TT/TL	Ind Code	Product Code	Material ID	Non/Skid	Weight	Rim Width & Flange
49	Radial	2700R49	2S	2X	TL	E4	136061743	81993	81	2989	19.5-4.0
49	Radial	2700R49	3S	2X	TL	E4	136061744	114579	81	2992	19.5-4.0
49	Radial	2700R49	4S	2X	TL	E4	136061742	80382	80	2994	19.5-4.0
51	Radial	3000R51	4S	2X	TL	E4	154067742	6179	87	4027	22.00-4.5
51	Radial	3300R51	2H	2X	TL	E4	154070972	6193	95	5135	24.00-5.0
51	Radial	3300R51	3H	2X	TL	E4	154070240	112639	95	5138	24.00-5.0
51	Radial	3300R51	4H	2X	TL	E4	154070975	6195	95	5141	24.00-5.0
51	Radial	3600R51	2S	2X	TL	E4	154074743	6221	108	5918	26.00-5.0
51	Radial	3600R51	3H	2X	TL	E4	154074240	110357	108	6155	26.00-5.0
51	Radial	3600R51	4H	2X	TL	E4	154074975	6224		6159	26.00-5.0
57	Radial	3700R57	2H	2X	TL	E4	154081972	6233	108	7667	27.00-6.0
57	Radial	3700R57	3H	2X	TL	E4	154081240	102786	108	7601	27.00-6.0
57	Radial	3700R57	4H	2X	TL	E4	154081975	6235	108	7678	27.00-6.0
57	Radial	3700R57	4S	2X	TL	E4	154081742	6230		6855	27.00-6.0
57	Radial	4000R57	2H	2X	TL	E4	154110972	6251		8457	29.00-6.0

UNDERGROUND MINING TIRES

Goodyear® offers a wide selection of specially constructed radial mining tires for tough underground environments. Offering high-strength casings, tough tread compounds and a diverse range of tread designs for individual applications, Goodyear mining tires offer optimized treadwear, traction and cut resistance to help you reduce downtime and lower your operating costs.

RADIAL UNDERGROUND MINING APPLICATION

- High-strength casings offer superior resistance to cuts and impact damage for enhanced retreadability
- Tough tread compounds offer exceptional abrasion resistance to greatly increase treadwear and resist cuts and snags
- A wide selection of tread designs offers the traction and toughness required for specific underground mining applications

TOUGHNESS FOR BIAS UNDERGROUND MINING APPLICATIONS

- High-tensile strength steel wires help maintain an exceptional tire-to-rim fit to resist slippage in full-torque applications
- Breaker plies help provide impact resistance and distribute shock loads over the entire body of the tire
- A tough undertread featuring a high-adhesion compound improves retreadability and guards against bruise breaks
- The tread and sidewall feature long-wearing Abrasive-Resistant (AR) tread compounds for enhanced traction, toughness and weather resistance
- A nylon cord body efficiently distributes deflection under heavy loads



RADIAL SELECTION – UNDERGROUND MINING APPLICATION

Choose the Goodyear® tire that offers speed, cut resistance and traction for your job.

OPERATING SPEED



RL-5K



RL-5S



RL-4D

CUT RESISTANCE

TRACTION

BIAS SELECTION – UNDERGROUND MINING APPLICATION

Choose the Goodyear tire that offers speed, cut resistance and traction for your job.

OPERATING SPEED



XTR-3C



XTRWL



UMS-3A



UMS-3B



WRL-3A

TRACTION



SMO D/L-5B



SMO-5A
SMO-5C
SMO-5D

CUT RESISTANCE

RL-5K

**SPECIALIZED SUPER EXTRA TREAD (250-LEVEL)
RADIAL LOADER TIRE WITH HALF-TRACK DESIGN
FOR TEAR RESISTANCE AND TRACTION**



- 250-level tread depth, 150% deeper than standard L-3, offers the deepest tread depth available for enhanced wear
- Combined smooth and lug tread pattern with a smooth outer section for tear resistance and lugs on inboard side for traction
- Radial construction offers improved treadwear and cooler running
- Unique synthetic/natural rubber compound for long-wearing tread and advanced cut resistance
- High-tensile steel belt package offers enhanced impact and cut resistance

Rim	Bias/Radial	Tire Size	Comp	Index LR	TT/TL	Ind Code	Product Code	Material ID	Non/Skid	Weight	Rim Width & Flange
20	Radial	1200R20NHS	6S	3X	TL	L5	152117476	169964	72	352	8.50
20	Radial	1200R20NHS	6S	3X	TL	L5	152117124	163302	72	330	8.50
20	Radial	46X15R20	6S	3X	TL	L5	152331409	195975	72	435	11.00-2.0
24	Radial	46X12R20	6S	3X	TL	L5	152477405	202132	72	351	8.5-2.0
25	Radial	175R25	6S	3X	TL	L5	152127079	175168	80	641	14.00-1.5
25	Radial	175R25	6S	2X	TL	L5	152131466	215643	80	626	14.00-1.5
25	Radial	1800R25	6S	2X	TL	L5	153028439	6109	99	1059	13.00-2.5
25	Radial	205R25	6S	2X	TL	L5	155010439	217211	90	840	17.00-2.0
25	Radial	205R25	6S	2X	TL	L5	155010382	216138	91	818	17.00-2.0
25	Radial	235R25	6S	1X	TL	L5	153082439	6149		1115	19.50-2.5
25	Radial	235R25	4S	2X	TL	L5	153083411	143728		815	19.50-2.5
25	Radial	235R25	6S	2X	TL	L5	153083439	196653	99		19.50-2.5
25	Radial	235R25	6S	2X	TL	L5	153103382	219241	99	1034	19.50-2.5
25	Radial	265R25	6S	2X	TL	L5	136087024	190447	110	720	22.00-3.0
25	Radial	265R25	6S	2X	TL	L5	136087409	199657	110	1537	22.00-3.0
25	Radial	265R25	6S	2X	TL	L5	136087439	75874	110	1537	22.00-3.0
25	Radial	265R25	6S	3X	TL	L5S	136012651	220316	110	1699	22.00-3.0
25	Radial	295R25	6S	1X	TL	L5	136090409	143708	120	1975	25.00-3.5
25	Radial	295R25	6S	2X	TL	L5	136098493	215196	120		25.00-3.5
25	Radial	295R25	6S	2X	TL	L5	136093409	199692	120	2049	25.00-3.5
29	Radial	295R29	4S	2X	TL	L5	136092411	176293	120	2096	25.00-3.5
29	Radial	295R29	6S	2X	TL	L5	136092409	175029	120	2111	25.00-3.5
33	Radial	875/65R33	6S	2X	TL	L5	136485049	166174	122	2659	28.00-3.5
39	Radial	1150/65R39	6S	2X	TL	L5	136622237	199659	149	4963	36.00-4.5

RL-4D

HI-STABILITY, EXTRA TREAD RADIAL LOADER TIRE FOR USE IN ROCK OR LOAD AND CARRY SERVICE



- Solid tread center with improved treadwear and longwear for high stability
- Combined smooth and lug tread pattern offering a smooth outer section for tear resistance and lugs on inboard side for traction
- Unique synthetic/natural rubber compound for a long-wearing tread and advanced cut resistance
- High-tensile steel belt package for enhanced impact and resistance

Rim	Bias/Radial	Tire Size	Comp	Index LR	TT/TL	Ind Code	Product Code	Material ID	Non/Skid	Weight	Rim Width & Flange
29	Radial	875/65R29	6S	2X	TL	L4	136703337	205924	72	1685	27.00-3.0

RL-5S

SMOOTH, SUPER EXTRA TREAD (250-LEVEL) RADIAL LOADER TIRE FOR SEVERE OPERATING ENVIRONMENTS



- 250-level tread depth, 150% deeper than standard L-3, offers the deepest tread depth available for maximum wear
- Smooth tread design helps eliminate lug tearing – excellent for hard rock quarry service, longer wear and smooth ride
- Radial construction offers improved treadwear and cooler running
- Unique synthetic/natural rubber compound for long-wearing tread and advanced cut resistance
- High-tensile steel belt package offers enhanced impact and cut resistance

Rim	Bias/Radial	Tire Size	Comp	Index LR	TT/TL	Ind Code	Product Code	Material ID	Non/Skid	Weight	Rim Width & Flange
20	Radial	1200R20NHS	6S	3X	TL	L5S	152117078	189259	72	366	8.50
25	Radial	175R25	6S	3X	TL	L5S	152127146	164769	80	660	14.00-1.5
25	Radial	175R25	6S	2X	TL	L5S	152131401	215542	80	660	14.00-1.5
25	Radial	1800R25	6S	3X	TL	L5S	153883143	164859	99	1192	13.00-2.5
25	Radial	235R25	6S	2X	TL	L5S	153103402	215200	99	1210	19.50-2.5
25	Radial	265R25	6S	2X	TL	L5S	136013718	208931	110	1209	22.00-3.0
25	Radial	295R25	6S	2X	TL	L5S	136098078	209633	120	1587	25.00-3.5
33	Radial	875/65R33	6S	2X	TL	L5S	136001646	216564	120	2751	28.00-3.5

WRL-3A

ULTIMATE VALUE BIAS TRACTION TIRE FOR USE ON WALL CARRIERS IN STEEL MILLS AND OTHER HARSH ENVIRONMENTS



- Oversized, high-strength bead bundle, 25% larger than a standard haulage tire, offers excellent stability for high loads and high inflation
- Advanced bias-ply construction helps resist sidewall damage, improves stability and offers excellent damping
- Tough, durable casing for enhanced retreadability and lower cost per hour
- 100-level tread depth for cool running offers excellent value
- Uniquely formulated synthetic/natural rubber compound for advanced tear resistance

Rim	Bias/Radial	Tire Size	Comp	Index LR	TT/TL	Ind Code	Product Code	Material ID	Non/Skid	Weight	Rim Width & Flange
20	Bias	1400-20NHS		24	TT	E3	123428645	4317	34	317	10.00W
24	Bias	1400-24NHS		24	TT	E3	123447645	4362	33	344	10.00W
24	Bias	1400-24NHS		28	TT	E3	123003006	220218	33	366	10.00W
24	Bias	1400-24NHS		28	TT	E3	123448645	4370	33	366	10.00W

UMS-3B

100-LEVEL MINE TIRE WITH SHOULDER-TO-SHOULDER LUGS FOR EXCELLENT FORWARD TRACTION



- Wide, flat tread design for even pressure distribution for long wear
- Shoulder-to-shoulder multi-angled lugs for premium forward/aft traction in most underfoot conditions
- Tough bias casing helps resist cuts and bruises

Rim	Bias/Radial	Tire Size	Comp	Index LR	TT/TL	Ind Code	Product Code	Material ID	Non/Skid	Weight	Rim Width & Flange
10	Bias	27-15-10					210007105	134326		112	13.00B
10	Bias	27-9-10		16	TT		210014105	185373	27	73	13.00B

UMS-3A

GENERAL PURPOSE DESIGN FOR MEDIUM-SIZE UNDERGROUND MINE EQUIPMENT



- Aggressive and tough lug design for premium performance in harsh underfoot conditions
- Non-directional tread design for good fore and aft traction
- Unique synthetic/natural rubber compound for long-wearing tread and advanced cut resistance
- Tough casing for enhanced retreadability
- Wide base construction offers high flotation, improved stability and reduced ground pressure

Rim	Bias/Radial	Tire Size	Comp	Index LR	TT/TL	Ind Code	Product Code	Material ID	Non/Skid	Weight	Rim Width & Flange
20	Bias	1200-20NHS	6S	20	TT		123342842	4255	28	223	8.50
20	Bias	1200-20	6S	24	TT		123343842	177313		220	8.50
20	Bias	1200-20NHS	6S	28	TT		123251842	181223	28	253	8.50
20	Bias	1400-20NHS	6S	24	TT		123428842	4320	33	320	10.00W
20	Bias	1400-20NHS	6S	28	TT		123252842	177314	33	356	10.00W
20	Bias	1400-20	6S		TT		123250842	185490		376	10.00W
24	Bias	1200-24NHS	6S	16	TT		123364842	4268	28	237	8.50V
24	Bias	1400-24NHS	6S	28	TT		123448842	115299	33	407	10.00W

XTRWL

UNDERGROUND MINE SERVICE TIRE FOR SEVERE OPERATING CONDITIONS



- Square shoulders and a flat tread design offer outstanding wear, good retreadability and even pressure distribution for excellent mobility
- Enhanced carcass strength for superb toughness and resistance to cuts and bruises
- Zigzag center groove and massive lugs for excellent lateral traction and long wear

Rim	Bias/Radial	Tire Size	Comp	Index LR	TT/TL	Ind Code	Product Code	Material ID	Non/Skid	Weight	Rim Width & Flange
15	Bias	32X15-15NHS		24	TL	IND	210454874	164194	31	168	11.50
15	Bias	35X15-15NHS		28	TL	IND	210453874	163696	31	211	11.50
15	Bias	35X15-15NHS		32	TL	IND	210459874	164197	31	230	11.50
15	Bias	36X11-15		24	TT	IND	210013881	177440	27	169	7.50V
15	Bias	825-15		24	TT	IND	210012875	180521	27	136	6.50T
20	Bias	42-13-20 NHS				IND	210032453	191186		301	9.50
20	Bias	42-13-20NHS		32	TT	IND	210026450	190009	27	241	9.50
20	Bias	44-18-20NHS		32	TL	IND	210452874	8247	44	368	15.00T
20	Bias	44X18-20NHS		36	TL	IND	210450874	191060	44	372	15.00T
20	Bias	44X18-20NHS		48	TL	IND	210451874	191063	44	442	15.00T

XTR-3C

GOOD WEAR AND LOAD DISTRIBUTION FROM THE HIGH SOLID-TO-VOID RATIO

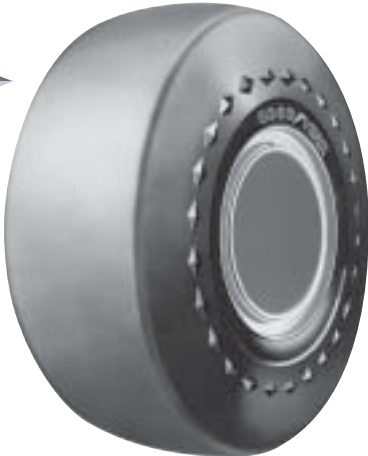


- Aggressive, durable and non-directional lug design offers good traction, improved stability and reduced ground pressure with Permafoam fill
- Sidewall scuff bar with a sidewall rubber gauge over 1" thick for improved durability and resistance to cutting and abrasion
- Uniquely formulated natural/synthetic rubber compound for advanced cut resistance and protection against sidewall damage
- Tough casing for enhanced retreadability

Rim	Bias/Radial	Tire Size	Comp	Index LR	TT/TL	Ind Code	Product Code	Material ID	Non/Skid	Weight	Rim Width & Flange
20	Bias	50X20-20NHS		36	TL		210435100	190122	32	454	15.00T

SMO D/L-5B

SMOOTH, SUPER EXTRA TREAD, 250-LEVEL BIAS LOADER TIRE FOR USE IN SEVERE UNDERFOOT CONDITIONS

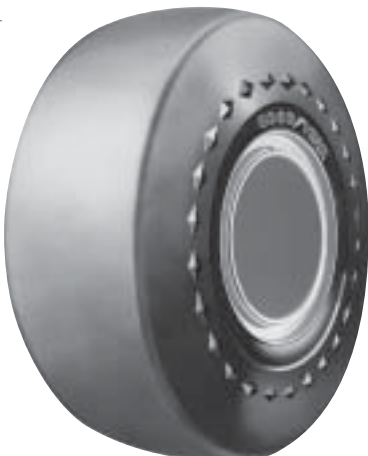


- 250-level tread depth, 150% deeper than standard L-3, for the deepest tread depth available for maximum wear
- Smooth tread design helps eliminate lug tearing – excellent for hard rock quarry service and longer wear
- Extra-heavy sidewall helps resist cuts and snags
- Advanced compounds with uniquely formulated high synthetics for a long-wearing tread, tough durability in severe conditions and ultra abrasion cut resistance

Rim	Bias/Radial	Tire Size	Comp	Index LR	TT/TL	Ind Code	Product Code	Material ID	Non/Skid	Weight	Rim Width & Flange
25	Bias	175-25	6S	20	TL	L5S	123877614	4404	104	660	14.00-1.5

SMO-5A

SMOOTH, SUPER EXTRA TREAD, 250-LEVEL BIAS MINE TIRE FOR USE IN SEVERE UNDERFOOT CONDITIONS WHERE TRACTION IS NOT PARAMOUNT



- 250-level tread depth, 150% deeper than standard L-4, offers the deepest tread depth available for maximum wear
- Smooth tread design helps eliminate lug tearing – excellent for hard rock quarry service and longer wear
- Extra-heavy sidewall helps resist cuts and snags
- Advanced compounds with uniquely formulated high synthetics for long-wearing tread, tough durability in severe conditions and ultra abrasion cut resistance
- Tough casing for additional impact and cut resistance and enhanced retreadability

Rim	Bias/Radial	Tire Size	Comp	Index LR	TT/TL	Ind Code	Product Code	Material ID	Non/Skid	Weight	Rim Width & Flange
25	Bias	2100-25	6S	32	TL	IND5S	124593197	4465	107	1347	15.00-3.0

SMO-5C

SMOOTH, SUPER EXTRA TREAD, 250-LEVEL BIAS MINE TIRE FOR USE IN SEVERE UNDERFOOT CONDITIONS WHERE TRACTION IS NOT PARAMOUNT



- 250-level tread depth, 150% deeper than standard L-8, offers the deepest tread depth available for maximum wear
- Smooth tread design helps eliminate lug tearing – excellent for hard rock quarry service and longer wear
- Extra-heavy sidewall helps resist cuts and snags
- Advanced compounds with uniquely formulated high synthetics for a long-wearing tread, tough durability in severe conditions and ultra abrasion cut resistance
- Tough casing for additional impact and cut resistance and enhanced retreadability

Rim	Bias/Radial	Tire Size	Comp	Index LR	TT/TL	Ind Code	Product Code	Material ID	Non/Skid	Weight	Rim Width & Flange
25	Bias	1800-25	6S	24	TL	L5S	133536245	4999	100	1084	13.00-2.5
25	Bias	1800-25	6S	28	TL	L5S	133537245	5004	100	1103	13.00-2.5
25	Bias	23/90-25	6S	30	TL	L5S	133938245	5096	100	1227	
29	Bias	295-29	6S	34	TL	L5S	124935245	84853	137	2540	25.00-3.5

SMO-5D

SMOOTH, SUPER EXTRA TREAD, 250-LEVEL BIAS MINE TIRE FOR USE IN SEVERE UNDERFOOT CONDITIONS WHERE TRACTION IS NOT PARAMOUNT



- 250-level tread depth, 150% deeper than standard L-9, offers the deepest tread depth available for maximum wear
- Smooth tread design helps eliminate lug tearing – excellent for hard rock quarry service and longer wear
- Extra-heavy sidewall helps resist cuts and snags
- Advanced compounds with uniquely formulated high synthetics for a long-wearing tread, tough durability in severe conditions and ultra abrasion cut resistance
- Tough casing for additional impact and cut resistance and enhanced retreadability

Rim	Bias/Radial	Tire Size	Comp	Index LR	TT/TL	Ind Code	Product Code	Material ID	Non/Skid	Weight	Rim Width & Flange
25	Bias	1800-25	6S	28	TL	L5S	133537001	131560	102	1094	13.00-2.5

LARGE LOADER TIRES

Goodyear® offers a variety of large loader tires that feature enhanced treadwear, a lower cost-per-hour and superb retreadability. Plus, you will have access to tires that inspire confidence and productivity while moving large loads in mud, sand, hardpack or rocky terrain.

RADIAL STABILITY AND TRACTION

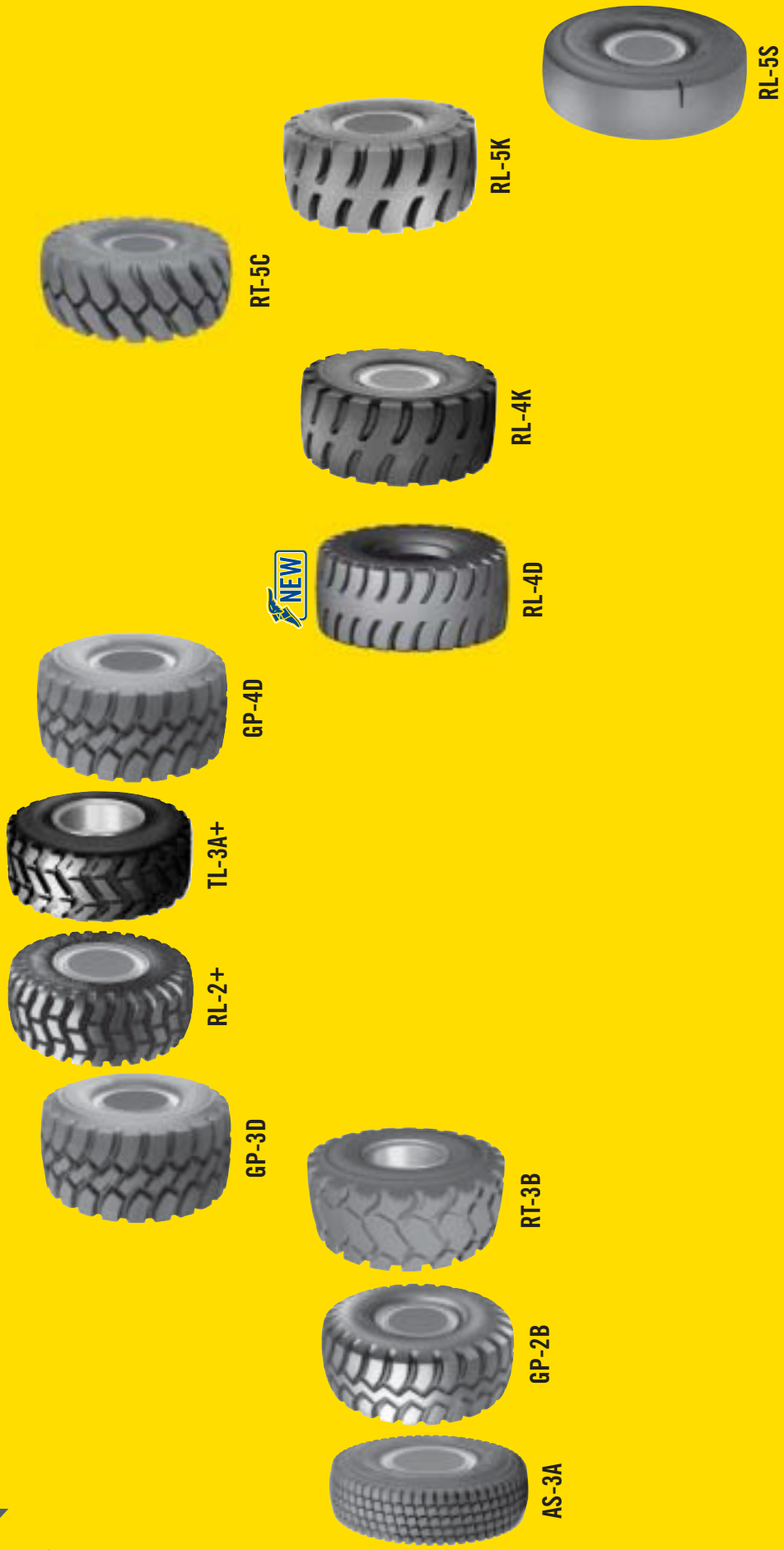
- Large footprint area helps enhance traction and mobility
- Tough casings help provide stability to help handle heavy payloads
- Reinforced sidewalls help resist punctures and damage



LOADER & GRADER APPLICATION

Choose the Goodyear tire that offers speed, cut resistance and traction for your job.

OPERATING SPEED



CUT RESISTANCE

TRACTION

AS-3A

UNIQUE, ALL-SEASON RADIAL TIRE FOR OVER-THE-ROAD HIGHWAY APPLICATIONS



- Multiple groove edges offer superior traction on all surfaces
- Specially placed blades for optimized ice and snow traction
- Computer-generated tread design for optimal traction and treadwear to minimize use of chains
- Unique groove shape for optimized self-cleaning in all conditions and designed to accommodate chains
- Wide-base construction for high flotation, improved stability and reduced ground pressure
- Radial construction for improved mobility, softer ride, improved treadwear and better fuel economy
- Flexible block elements for minimized stone retention

Rim	Bias/Radial	Tire Size	Comp	Index LR	TT/TL	Ind Code	Product Code	Material ID	Non/Skid	Weight	Rim Width & Flange
24	Radial	1400R24TG		2X	TL	G3	152475283	207974	32	354	8.00TG
24	Radial	1400R24TG			TL	G3	152475316	208906	32	314	8.00TG
24	Radial	1400R24TG		1X	TL	G3/L3	152445052	133897	32	281	8.00TG
25	Radial	175R25	4S	2X	TL	G/L3	152523252	202972	33	367	14.00-1.5
25	Radial	175R25	4S	1X	TL	G3/L3	152525042	164847		325	14.00-1.5

RT-3B

A STRONG CHOICE FOR USE ON ROUGH TERRAIN



- Multiple steel belts to help save you downtime and money by resisting rock cuts and penetrations
- Wide tread width improves mobility and gives a more stable, comfortable ride
- All-steel radial construction helps resist heat buildup
- Made with industry-leading compounds to help improve cost per hour and overall treadwear

Rim	Bias/Radial	Tire Size	Comp	Index LR	TT/TL	Ind Code	Product Code	Material ID	Non/Skid	Weight	Rim Width & Flange
25	Radial	175R25	6S	1X	TL	E/G/L3	152524375	209859	36	404	14.00-1.5
25	Radial	205R25	6S	1X	TL	E/G/L3	155903375	209841	41	559	17.00-2.0
25	Radial	235R25	6S	1X	TL	E/G/L3	153082375	209843	45	743	19.50-2.5
25	Radial	235R25	6S		TL	G3/L3	153082090	176768	45	743	19.50-2.5
25	Radial	265R25	6S	1X	TL	E/G/L3	136086375	209842	50	1054	22.00-3.0
25	Radial	295R25	6S	2X	TL	E/G/L3	136090358	214280	55	1475	25.00-3.5

GP-2B

EXCELLENT VALUE, SMOOTH-RIDING RADIAL TIRE FOR MULTIPLE USES IN HIGH TMPH APPLICATIONS



- Solid center rib offers good lateral traction, long wear and a smooth ride
- Open shoulder grooves offer outstanding traction and self-cleaning
- Non-directional tread design for high fore and aft traction
- 100-level tread depth for cooler running in load and carry operations
- Enhanced radial construction for good stability, improved mobility, softer ride, improved treadwear and better fuel economy
- Unique high-synthetic compound for a long-wearing tread and ultra abrasion cut resistance
- High-tensile steel belt package for enhanced impact resistance

Rim	Bias/Radial	Tire Size	Comp	Index LR	TT/TL	Ind Code	Product Code	Material ID	Non/Skid	Weight	Rim Width & Flange
25	Radial	155R25	6S	1X	TL	E/G/L3	152888070	87713	30	254	12.00-1.3
25	Radial	175R25	6S	1X	TL	E/G/L3	152524070	6072	32	337	14.00-1.5
25	Radial	205R25	6S	1X	TL	E/G/L3	155903276	6277	37	507	17.00-2.0
25	Radial	235R25	6S	1X	TL	E/G/L3	153082276	6146		678	19.50-2.5
25	Radial	235R25	4S	2X	TL	E/G/L3	153083272	6159	40	670	19.50-2.5
25	Radial	265R25	6S	1X	TL	E/G/L3	136086276	5238	45	956	22.00-3.0
25	Radial	265R25	4S	2X	TL	E/G/L3	136087272	5250	45	961	22.00-3.0
25	Radial	295R25	6S	1X	TL	E/L3	136090276	5262	48	1205	25.00-3.5
25	Radial	295R25	4S	2X	TL	E/G/L3	136093605	5302	48	1240	25.00-3.5
25	Radial	385/95R25		170E	TL	E/G/L3	152040069	193082	30	349	10.00-1.5
25	Radial	445/95R25		177E	TL	E/G/L3	155214214	6270	34	505	14.00-1.5
25	Radial	525/80R25		179E	TL	E/G/L3	155237286	6272	36	490	17.00-2.0

GP-3D

PREMIUM 115-LEVEL, TRACTION RADIAL TIRE WITH 15% MORE TREAD DEPTH FOR USE ON ARTICULATED TRUCK DUMP TRUCKS FOR GREATER MOBILITY



- 65-Series profile for high flotation to improve stability and reduced ground pressure
- Ultra-wide tread arc width for added sidewall protection, greater flotation and traction along with longer tread life
- Non-directional tread design for high fore, aft and lateral traction
- Open shoulder grooves for excellent traction and self-cleaning
- Radial construction for good mobility and flotation, softer ride, improved treadwear and better fuel economy
- Unique synthetic/natural rubber compound for a long-wearing tread, advanced cut resistance and sidewalls resistant to ozone cracking
- High-tensile steel belt package for enhanced impact resistance
- 115-level tread depth for enhanced traction and tread life
- Centerline riding lugs for good lateral traction, long wear and smooth ride



Rim	Bias/Radial	Tire Size	Comp	Index LR	TT/TL	Ind Code	Product Code	Material ID	Non/Skid	Weight	Rim Width & Flange
25	Radial	550/65R25	6S	1X	TL	E/L3	153129303	165531	33	673	14.00-1.5
25	Radial	600/65R25	6S	1X	TL	E/L3	136144303	174117	40	600	17.00-2.0
25	Radial	650/65R25	4S	2X	TL	E3	155062031	157007	33	537	19.50-2.5
25	Radial	650/65R25	6S	2X	TL	E/L3	155062030	156837	33	683	19.50-2.5
25	Radial	650/65R25	6S	1X	TL	L3	155048028	156392	47	631	19.50-2.5
25	Radial	750/65R25	4S	2X	TL	E/L4	136164290	176208	47	915	24.00-3.0
25	Radial	750/65R25	6S	2X	TL	E/L3	136164303	176207	47	900	24.00-3.0

RL-2+

UNIQUE 125-LEVEL, RADIAL TIRE DESIGN WITH 25% MORE TREAD DEPTH, OUTSTANDING TRACTION IN SOFT SOIL AND LOOSE UNDERFOOT CONDITIONS



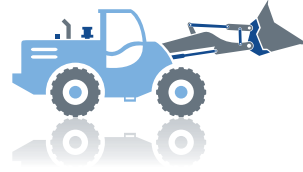
- Aggressive lug pattern offers superior traction
- 125-level tread depth, 25% deeper than standard E-3, for long wear, greater cut resistance and enhanced traction
- Ultra-wide tread arc width for enhanced forward and lateral traction with excellent flotation
- Open tread design for outstanding self-cleaning
- Non-directional tread design for high fore and aft traction
- Radial construction for improved mobility and flotation, softer ride, improved treadwear and better fuel economy
- Unique synthetic/natural rubber compound for a long-wearing tread, advanced cut resistance and sidewalls resistant to ozone cracking
- High-tensile steel belt package for enhanced impact resistance



Rim	Bias/Radial	Tire Size	Comp	Index LR	TT/TL	Ind Code	Product Code	Material ID	Non/Skid	Weight	Rim Width & Flange
25	Radial	175R25	6S		TL	L2	152524374	6075	45	395	14.00-1.5
25	Radial	205R25	4S		TL	E2	155904443	6291	50	573	17.00-2.0
25	Radial	205R25	6S		TL	L2	155903444	6282	50	541	17.00-2.0
25	Radial	235R25	6S	1X	TL	E2/G2/L2	153082444	6152	53	780	19.50-2.5
25	Radial	235R25	6S	C1	TL	E/G/L3	153097930	207767	53	807	19.50-2.5
25	Radial	265R25	6S	1X	TL	L2	136086444	5244	56	1101	22.00-3.0
25	Radial	265R25	4S	2X	TL	E2	136087443	5256	56	1104	22.00-3.0
25	Radial	295R25	6S	1X	TL	L2	136090444	5269	60	1439	25.00-3.5
29	Radial	295R29	6S	2X	TL	E3	136093599	184345	60	1527	25.00-3.5
29	Radial	295R29	4S	2X	TL	E2	136092443	5284	60	1499	25.00-3.5

TL-3A+

125-LEVEL, RADIAL TIRE DESIGN WITH 25% MORE TREAD DEPTH FOR SUPERIOR TRACTION AND RIDE IN SOFT SOIL AND LOOSE UNDERFOOT CONDITIONS



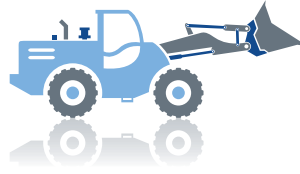
- Computer-engineered lug design helps reduce vibration and offer excellent traction
- 125-level tread depth, 25% deeper than standard E-3, for long wear, greater cut resistance and enhanced traction
- Ultra-wide tread arc width helps provide enhanced forward and lateral traction and flotation
- Open tread design helps promote self-cleaning
- Non-directional tread design for high traction in both fore and aft directions
- Radial construction helps provide improved mobility and flotation, softer ride, enhanced treadwear and better fuel economy
- Unique synthetic/natural rubber material for a long-wearing tread, advanced cut-resistant tread and sidewalls resistant to ozone cracking
- High-tensile steel belt package for enhanced impact resistance



Rim	Bias/Radial	Tire Size	Comp	Index LR	TT/TL	Ind Code	Product Code	Material ID	Non/Skid	Weight	Rim Width & Flange
25	Radial	175R25	6S	C1	TL	E/G/L3	155908351	208582	45	818	14.00-1.5
25	Radial	205R25	6S	C1	TL	E/G/L3	155906351	208581	51	818	17.00-2.0
25	Radial	235R25	6S	C1	TL	E/G/L3	153097059	207768	54	690	19.50-2.5
25	Radial	265R25	4S	2X	TL	E3	136087060	165259		1107	22.00-3.0
25	Radial	265R25	6S	2X	TL	E3	136087244	201623		1112	22.00-3.0
25	Radial	265R25	6S	C1	TL	E/G/L3	136084244	206924	59	1112	22.00-3.0
25	Radial	295R25	4S		TL	E3	136093060	201612		1481	25.00-3.5
25	Radial	295R25	6S	2X	TL	E3	136093244	201625		1482	25.00-3.5
25	Radial	295R25	6S	C1	TL	E/G/L3	136085244	206926	60	1504	25.00-3.5
25	Radial	295R25	6S	2X	TL	E/G/L3	136090465	214793	60	1556	25.00-3.5
25	Radial	750/65R25	6S	2X	TL	E/G/L3	136165082	207973	57	954	24.00-3.0

GP-4D

**EXTRA 150-LEVEL TREAD DEPTH/100-LEVEL OD,
ENHANCED TRACTION RADIAL TIRE FOR USE
ON ARTICULATED DUMP TRUCKS**



- 150-level tread depth for enhanced mud and soft soil traction and extended tread life
- 100-level OD for no interference on tandem axles
- Centerline riding lugs for good lateral traction, long wear and smooth ride
- Available in 65-Series profile and selected wide base sizes for high flotation, improved stability and reduced ground pressure
- Ultra-wide tread arc width for enhanced sidewall protection, greater flotation and traction and longer tread life
- Non-directional tread design for high fore, aft and lateral traction
- Open shoulder grooves for excellent traction and self-cleaning tread design
- Radial construction for good mobility and flotation, softer ride, improved treadwear and better fuel economy
- Unique synthetic/natural rubber compound for a long-wearing tread and advanced cut resistance
- High-tensile steel belt package for enhanced impact resistance



Rim	Bias/Radial	Tire Size	Comp	Index LR	TT/TL	Ind Code	Product Code	Material ID	Non/Skid	Weight	Rim Width & Flange
25	Radial	205R25	6S	C1	TL	E/L4	136706343	208321	66	675	17.00-2.0
25	Radial	235R25	6S	C1	TL	E/L4	153097928	208373	71	850	19.50-2.5
25	Radial	265R25	6S	C1	TL	E/L4	136084928	209148	69	1198	22.00-3.0
25	Radial	295R25	6S	2X	TL	E/L4	136090357	214279	72	1522	25.00-3.5
25	Radial	265R25	6S	2X	TL	E/L4	136087095	176202	69	1198	22.00-3.0
29	Radial	775/65R29	6S	2X	TL	E/L4	136301095	193159	67	1177	24.00-3.0
29	Radial	775/65R29	6S	1X	TL	E/L4	136302095	193161	68	1205	24.00-3.0
29	Radial	875/65R29	4S	2X	TL	E/L4	136703094	120727	73	1521	27.00-3.0
29	Radial	875/65R29	6S	2X	TL	E/L4	136708357	215194	73	1529	27.00-3.0
29	Radial	875/65R29	6S	C1	TL	E4/L4	136704343	208304	72	1522	27.00-3.0

RL-4K

EXTRA TREAD RADIAL LOADER TIRE FOR USE IN ROCK OR LOAD AND CARRY SERVICE



- 150-level tread depth, 50% deeper than standard L-3, for extra tread and long wear
- Combined smooth and lug tread pattern offering a smooth outer section for tear resistance and lugs on inboard side for traction
- Radial construction for improved treadwear and cooler running
- Unique synthetic/natural rubber compound for a long-wearing tread and advanced cut resistance
- High-tensile steel belt package for enhanced impact and cut resistance
- Tire available in multiple tread configurations including 24/24 (24 lugs per side) appropriate for both general load and carry service



Rim	Bias/Radial	Tire Size	Comp	Index LR	TT/TL	Ind Code	Product Code	Material ID	Non/Skid	Weight	Rim Width & Flange
25	Radial	205R25	6S	2X	TL	L4	155010521	217353	64	818	17.00-2.0
25	Radial	235R25	6S	2X	TL	L4	153082475	204305	68	1105	19.50-2.5
25	Radial	265R25	6S	2X	TL	L4	136013365	205094	110	1332	22.00-3.0
25	Radial	295R25	6S	1X	TL	L4	136090308	143264	73	1639	25.00-3.5
25	Radial	295R25	6S	2X	TL	L4	136093308	199694	72	1742	25.00-3.5
25	Radial	295R25	6S	2X	TL		136098494	215651		1742	25.00-3.5
29	Radial	295R29		1X	TL	L4	136091308	143259	72	1785	25.00-3.5
33	Radial	35/65R33					136080440	106469		2026	28.00-3.5
33	Radial	875/65R33	6S	2X	TL	L4	136006684	223966		2630	28.00-3.5
33	Radial	875/65R33	4S	2X	TL	L4	136006482	218603	73	2121	28.00-3.5
33	Radial	875/65R33	6S	2X	TL	L4	136485051	169530	73	2173	28.00-3.5

RT-5C

250-LEVEL TIRE FOR ROCK APPLICATIONS



- Open pattern design for outstanding traction performance in soft soil conditions
- Steel-cord belts help provide low rolling resistance and protect the casing against penetrations
- Radial construction for cooler running than bias with a smoother ride and long wear potential



Rim	Bias/Radial	Tire Size	Comp	Index LR	TT/TL	Ind Code	Product Code	Material ID	Non/Skid	Weight	Rim Width & Flange
25	Radial	235R25	6S	2X	TL	L5	153083201	194830	98	1078	19.50-2.5
25	Radial	265R25	6S	2X	TL	L5	136087201	193371	105	1387	22.00-3.0

RL-5K

SUPER EXTRA TREAD, 250-LEVEL RADIAL LOADER TIRE FOR USE IN SEVERE UNDERFOOT CONDITIONS



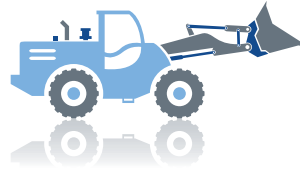
- 250-level tread depth, 150% deeper than standard L-3, for the deepest tread depth available for superior wear
- Combined smooth and lug tread pattern offers a smooth outer section for tear resistance and lugs on inboard side for traction
- Radial construction offers improved treadwear and cooler running
- Unique synthetic/natural rubber compound for a long-wearing tread and advanced cut resistance
- High-tensile steel belt package for enhanced impact and cut resistance

Rim	Bias/Radial	Tire Size	Comp	Index LR	TT/TL	Ind Code	Product Code	Material ID	Non/Skid	Weight	Rim Width & Flange
20	Radial	1200R20NHS	6S	3X	TL	L5	152117476	169964	72	352	8.50
20	Radial	1200R20NHS	6S	3X	TL	L5	152117124	163302	72	330	8.50
20	Radial	46X12R20	6S	3X	TL	L5	152477405	202132	72	351	8.5-2.0
20	Radial	46X15R20	6S	3X	TL	L5	152331409	195975	72	435	11.00-2.0
20	Radial	46X18R20	6S	3X	TL	L5	152310409	193153	72	486	13.00-2.0
25	Radial	175R25	6S	3X	TL	L5	152127079	175168	80	641	14.00-1.5
25	Radial	175R25	6S	2X	TL	L5	152131466	215643	80	626	14.00-1.5
25	Radial	1800R25	6S	2X	TL	L5	153028439	6109	99	1059	13.00-2.5
25	Radial	205R25	6S	2X	TL	L5	155010439	217211	90	840	17.00-2.0
25	Radial	205R25	6S	2X	TL	L5	155010382	216138	91	818	17.00-2.0
25	Radial	235R25	6S	1X	TL	L5	153082439	6149		1115	19.50-2.5
25	Radial	235R25	4S	2X	TL	L5	153083411	143728		815	19.50-2.5
25	Radial	235R25	6S	2X	TL	L5	153083439	196653	99	1131	19.50-2.5
25	Radial	235R25	6S	2X	TL	L5	153103382	219241	99	1034	19.50-2.5
25	Radial	265R25	6S	2X	TL	L5	136087024	190447	110	720	22.00-3.0
25	Radial	265R25	6S	2X	TL	L5	136087409	199657	110	1537	22.00-3.0
25	Radial	265R25	6S	2X	TL	L5	136087439	75874	110	1537	22.00-3.0
25	Radial	265R25	6S	3X	TL	L5S	136012651	220316	110	1700	22.00-3.0
25	Radial	295R25	6S	1X	TL	L5	136090409	143708	120	1975	25.00-3.5
25	Radial	295R25	6S	2X	TL	L5	136098493	215196	120	2117	25.00-3.5
25	Radial	295R25	6S	2X	TL	L5	136093409	199692	120	2049	25.00-3.5
29	Radial	295R29	4S	2X	TL	L5	136092411	176293	120	2096	25.00-3.5
29	Radial	295R29	6S	2X	TL	L5	136092409	175029	120	2111	25.00-3.5
33	Radial	875/65R33	6S	2X	TL	L5	136485049	166174	122	2659	28.00-3.5
33	Radial	875/65R33	6S	2X	TL	L5	136006685	224115		2661	28.00-3.5
39	Radial	45/65R39	6S	1X	TL	L5	136379479	153998	149	4788	36.00-4.5
39	Radial	1150/65R39	6S	2X	TL	L5	136622237	199659	149	4963	36.00-4.5
45	Radial	1150/65R45	6S	2X	TL	L5	136434158	187228	149	6171	36.00-4.5
45	Radial	1150/65R45	6S	2X	TL	L5	136434049	181787	149	5846	36.00-4.5
45	Radial	1150/65R45	4S		TL	L5	136434235	199655		5801	36.00-4.5

Also available in 12/12 size.

RL-5S

SMOOTH, SUPER EXTRA TREAD, 250-LEVEL RADIAL LOADER TIRE FOR SEVERE OPERATING ENVIRONMENTS



- 250-level tread depth, 150% deeper than standard L-3, for the deepest tread depth available for maximum wear
- Smooth tread design helps eliminate lug tearing – outstanding for hard rock quarry service, longer wear and smooth ride
- Radial construction for improved treadwear and cooler running
- Unique synthetic/natural rubber compound for a long-wearing tread and advanced cut resistance
- High-tensile steel belt package for enhanced impact and cut resistance

Rim	Bias/Radial	Tire Size	Comp	Index LR	TT/TL	Ind Code	Product Code	Material ID	Non/Skid	Weight	Rim Width & Flange
20	Radial	1200R20NHS	6S	3X	TL	L5S	152117078	189259	72	366	8.50
25	Radial	175R25	6S	3X	TL	L5S	152127146	164769	80	660	14.00-1.5
25	Radial	175R25	6S	2X	TL	L5S	152131401	215542	80	660	14.00-1.5
25	Radial	1800R25	6S	3X	TL	L5S	153883143	164859	99	1192	13.00-2.5
25	Radial	235R25	6S	2X	TL	L5S	153103402	215200	99	1210	19.50-2.5
25	Radial	265R25	6S	2X	TL	L5S	136013718	208931	110	1709	22.00-3.0
25	Radial	295R25	6S	2X	TL	L5S	136098078	209633	120	2264	25.00-3.5
33	Radial	875/65R33	6S	2X	TL	L5S	136001646	216564	120	2751	28.00-3.5

RL-4D

HI-STABILITY, EXTRA TREAD RADIAL LOADER TIRE FOR USE IN ROCK OR LOAD AND CARRY SERVICE



- Solid tread center with improved treadwear and longwear for high stability
- Combined smooth and lug tread pattern offering a smooth outer section for tear resistance and lugs on inboard side for traction
- Unique synthetic/natural rubber compound for a long-wearing tread and advanced cut resistance
- High-tensile steel belt package for enhanced impact and resistance

Rim	Bias/Radial	Tire Size	Comp	Index LR	TT/TL	Ind Code	Product Code	Material ID	Non/Skid	Weight	Rim Width & Flange
29	Radial	875/65R29	6S	2X	TL	L4	136703337	205924	72	1685	27.00-3.0

ARTICULATED DUMP TRUCK TIRES

ARTICULATED DUMP TRUCK RADIALS FOR MOBILITY, TRACTION AND A SMOOTH RIDE

- A large rectangular footprint offers even load distribution for optimized mobility in soft soils
- Aggressive shoulder lugs and angled grooves offer rugged traction in any type of soil
- Strong sidewalls and steel belts under the tread help resist cuts, snags and punctures
- Customized tread compounds help provide enhanced traction for your job



ARTICULATED DUMP TRUCK APPLICATION

Choose the Goodyear® tire that offers speed, cut resistance and traction for your job.

OPERATING SPEED



TL-3A+



RL-2+



GP-4D



GT-4A



RL-4D



GP-2B

TRACTION

CUT RESISTANCE

GP-2B

EXCELLENT VALUE, SMOOTH-RIDING RADIAL TIRE FOR MULTIPLE USES IN HIGH TMPH APPLICATIONS



- Solid center rib offers good lateral traction, long wear and a smooth ride
- Open shoulder grooves offer excellent traction and self-cleaning
- Non-directional tread design for high fore and aft traction
- 100-level tread depth for cooler running in load and carry operations
- Enhanced radial construction for good stability, improved mobility, softer ride, improved treadwear and better fuel economy
- Unique high-synthetic compound for a long-wearing tread and ultra abrasion cut resistance
- High-tensile steel belt package for enhanced impact resistance

Rim	Bias/Radial	Tire Size	Comp	Index LR	TT/TL	Ind Code	Product Code	Material ID	Non/Skid	Weight	Rim Width & Flange
24	Radial	385/95R24		170E	TL	E/G/L3	152043581	134172	30	348	10.00W
25	Radial	155R25	6S	1X	TL	E/G/L3	152888070	87713	30	254	12.00-1.3
25	Radial	175R25	6S	1X	TL	E/G/L3	152524070	6072	32	337	14.00-1.5
25	Radial	205R25	6S	1X	TL	E/G/L3	155903276	6277	37	500	17.00-2.0
25	Radial	235R25	4S	2X	TL	E/G/L3	153083272	6159	40	670	19.50-2.5
25	Radial	265R25	6S	1X	TL	E/G/L3	136086276	5238	45	956	22.00-3.0
25	Radial	265R25	4S	2X	TL	E/G/L3	136087272	5250	45	961	22.00-3.0
25	Radial	295R25	6S	1X	TL	E/L3	136090276	5262	48	1205	25.00-3.5
25	Radial	295R25	4S	2X	TL	E/G/L3	136093605	5302	48	1240	25.00-3.5
25	Radial	385/95R25		170E	TL	E/G/L3	152040069	193082	30	347	10.00-1.5
25	Radial	445/80R25		170E	TL	E/G/L3	152554069	6081	32	397	14.00-1.5
25	Radial	445/95R25		177E	TL	E/G/L3	155214214	6270	34	505	14.00-1.5
25	Radial	525/80R25		179E	TL	E/G/L3	155237286	6272	36	490	17.00-2.0

GP-3D

PREMIUM 115-LEVEL, TRACTION RADIAL TIRE WITH 15% MORE TREAD DEPTH FOR USE ON ARTICULATED TRUCK DUMP TRUCKS FOR GREATER MOBILITY



- 65-Series profile for high flotation to improve stability and reduced ground pressure
- Ultra-wide tread arc width for added sidewall protection, greater flotation and traction along with longer tread life
- Non-directional tread design for high fore, aft and lateral traction
- Open shoulder grooves for excellent traction and self-cleaning
- Radial construction for good mobility and flotation, softer ride, improved treadwear and better fuel economy
- Unique synthetic/natural rubber compound for a long-wearing tread, advanced cut resistance and sidewalls resistant to ozone cracking
- High-tensile steel belt package for enhanced impact resistance
- 115-level tread depth for enhanced traction and tread life
- Centerline riding lugs for good lateral traction, long wear and smooth ride



Rim	Bias/Radial	Tire Size	Comp	Index LR	TT/TL	Ind Code	Product Code	Material ID	Non/Skid	Weight	Rim Width & Flange
25	Radial	550/65R25	6S	1X	TL	E/L3	153129303	165531	33	673	14.00-1.5
25	Radial	600/65R25	6S	1X	TL	E/L3	136144303	174117	40	600	17.00-2.0
25	Radial	650/65R25	4S	2X	TL	E3	155062031	157007	33	537	19.50-2.5
25	Radial	650/65R25	6S	2X	TL	E/L3	155062030	156837	33	683	19.50-2.5
25	Radial	650/65R25	6S	1X	TL	L3	155048028	156392	47	631	19.50-2.5
25	Radial	750/65R25	4S	2X	TL	E/L4	136164290	176208	47	915	24.00-3.0
25	Radial	750/65R25	6S	2X	TL	E/L3	136164303	176207	47	899	24.00-3.0

TL-3A+

125-LEVEL, RADIAL TIRE DESIGN WITH 25% MORE TREAD DEPTH FOR SUPERIOR TRACTION AND RIDE IN SOFT SOIL AND LOOSE UNDERFOOT CONDITIONS



- Computer-engineered lug design helps reduce vibration and offer outstanding traction
- 125-level tread depth, 25% deeper than standard E-3, for long wear, greater cut resistance and enhanced traction
- Ultra-wide tread arc width helps provide enhanced forward and lateral traction and flotation
- Open tread design helps promote self-cleaning
- Non-directional tread design for high traction in both fore and aft directions
- Radial construction helps provide improved mobility and flotation, softer ride, enhanced treadwear and better fuel economy
- Unique synthetic/natural rubber material for a long-wearing tread, advanced cut-resistant tread and sidewalls resistant to ozone cracking
- High-tensile steel belt package for enhanced impact resistance



Rim	Bias/Radial	Tire Size	Comp	Index LR	TT/TL	Ind Code	Product Code	Material ID	Non/Skid	Weight	Rim Width & Flange
25	Radial	175R25	6S	C1	TL	E/G/L3	155908351	208582	45	818	14.00-1.5
25	Radial	205R25	6S	C1	TL	E/G/L3	155906351	208581	51	818	17.00-2.0
25	Radial	235R25	6S	C1	TL	E/G/L3	153097059	207768	54	690	19.50-2.5
25	Radial	265R25	4S	2X	TL	E3	136087060	165259		1107	22.00-3.0
25	Radial	265R25	6S	2X	TL	E3	136087244	201623		1112	22.00-3.0
25	Radial	265R25	6S	C1	TL	E/G/L3	136084244	206924	59	1112	22.00-3.0
25	Radial	295R25	4S		TL	E3	136093060	201612		1481	25.00-3.5
25	Radial	295R25	6S	2X	TL	E3	136093244	201625		1482	25.00-3.5
25	Radial	295R25	6S	C1	TL	E/G/L3	136085244	206926	60	1504	25.00-3.5
25	Radial	295R25	6S	2X	TL	E/G/L3	136090465	214793	60	1556	25.00-3.5
25	Radial	750/65R25	6S	2X	TL	E/G/L3	136165082	207973	57	954	24.00-3.0

RL-2+

UNIQUE 125-LEVEL, RADIAL TIRE DESIGN WITH 25% MORE TREAD DEPTH, OUTSTANDING TRACTION IN SOFT SOIL AND LOOSE UNDERFOOT CONDITIONS



- Aggressive lug pattern offers superior traction
- 125-level tread depth, 25% deeper than standard E-3, for long wear, greater cut resistance and enhanced traction
- Ultra-wide tread arc width for enhanced forward and lateral traction with excellent flotation
- Open tread design for outstanding self-cleaning
- Non-directional tread design for high fore and aft traction
- Radial construction for improved mobility and flotation, softer ride, improved treadwear and better fuel economy
- Unique synthetic/natural rubber compound for a long-wearing tread, advanced cut resistance and sidewalls resistant to ozone cracking
- High-tensile steel belt package for enhanced impact resistance



Rim	Bias/Radial	Tire Size	Comp	Index LR	TT/TL	Ind Code	Product Code	Material ID	Non/Skid	Weight	Rim Width & Flange
25	Radial	175R25	6S		TL	L2	152524374	6075	45	395	14.00-1.5
25	Radial	205R25	4S		TL	E2	155904443	6291	50	573	17.00-2.0
25	Radial	205R25	6S		TL	L2	155903444	6282	50	541	17.00-2.0
25	Radial	235R25	6S	1X	TL	E2/G2/L2	153082444	6152	53	780	19.50-2.5
25	Radial	235R25	6S	C1	TL	E/G/L3	153097930	207767	53	807	19.50-2.5
25	Radial	265R25	6S	1X	TL	L2	136086444	5244	56	1101	22.00-3.0
25	Radial	265R25	4S	2X	TL	E2	136087443	5256	56	1104	22.00-3.0
25	Radial	295R25	6S	1X	TL	L2	136090444	5269	60	1439	25.00-3.5
29	Radial	295R29	6S	2X	TL	E3	136093599	184345	60	1527	25.00-3.5
29	Radial	295R29	4S	2X	TL	E2	136092443	5284	60	1499	25.00-3.5

GP-4D

**EXTRA 150-LEVEL TREAD DEPTH/100-LEVEL OD,
ENHANCED TRACTION RADIAL TIRE FOR USE
ON ARTICULATED DUMP TRUCKS**



- 150-level tread depth for enhanced mud and soft soil traction and extended tread life
- 100-level OD for no interference on tandem axles
- Centerline riding lugs for good lateral traction, long wear and smooth ride
- Available in 65-Series profile and selected wide base sizes for high flotation, improved stability and reduced ground pressure
- Ultra-wide tread arc width for added sidewall protection, greater flotation and traction and longer tread life
- Non-directional tread design for high fore, aft and lateral traction
- Open shoulder grooves for excellent traction and self-cleaning tread design
- Radial construction for good mobility and flotation, softer ride, improved treadwear and better fuel economy
- Unique synthetic/natural rubber compound for a long-wearing tread and advanced cut resistance
- High-tensile steel belt package for enhanced impact resistance



Rim	Bias/Radial	Tire Size	Comp	Index LR	TT/TL	Ind Code	Product Code	Material ID	Non/Skid	Weight	Rim Width & Flange
25	Radial	205R25	6S	C1	TL	E/L4	136706343	208321	66	675	17.00-2.0
25	Radial	235R25	6S	C1	TL	E/L4	153097928	208373	71	850	19.50-2.5
25	Radial	265R25	6S	C1	TL	E/L4	136084928	209148	69	1198	22.00-3.0
25	Radial	295R25	6S	2X	TL	E/L4	136090357	214279	72	1522	25.00-3.5
25	Radial	265R25	6S	2X	TL	E/L4	136087095	176202	69	1198	22.00-3.0
29	Radial	775/65R29	6S	2X	TL	E/L4	136301095	193159	67	1177	24.00-3.0
29	Radial	775/65R29	6S	1X	TL	E/L4	136302095	193161	68	1205	24.00-3.0
29	Radial	875/65R29	4S	2X	TL	E/L4	136703094	120727	73	1521	27.00-3.0
29	Radial	875/65R29	6S	2X	TL	E/L4	136708357	215194	73	1529	27.00-3.0
29	Radial	875/65R29	6S	C1	TL	E4/L4	136704343	208304	72	1522	27.00-3.0

GT-4A

EXTRA 150-LEVEL TREAD DEPTH RADIAL TIRE FOR USE ON ARTICULATED DUMP TRUCKS IN CONSTRUCTION OR MINING



- Outstanding stability in soft soil or rough terrain with a long-wearing tread and advanced cut resistance
- 150-level tread depth, 50% deeper than standard E-3, for extra tread and long wear
- Enhanced radial construction for high flotation, improved stability and reduced ground pressure
- High-tensile steel belt package for enhanced impact resistance
- Non-directional tread design for high fore, aft and lateral traction
- Open shoulder grooves for excellent traction and self-cleaning
- Unique synthetic/natural rubber compound for a long-wearing tread and ultra abrasion cut resistance
- Ultra-wide tread arc width offers added sidewall protection, greater flotation and traction and longer tread life



Rim	Bias/Radial	Tire Size	Comp	Index LR	TT/TL	Ind Code	Product Code	Material ID	Non/Skid	Weight	Rim Width & Flange
25	Radial	295R25	4S	2X	TL	E4	136090644	216616	60	1363.4	25.00-3.0

RL-4D

HI-STABILITY, EXTRA TREAD RADIAL LOADER TIRE FOR USE IN ROCK OR LOAD AND CARRY SERVICE



- Solid tread center with improved treadwear and longwear for high stability
- Combined smooth and lug tread pattern offering a smooth outer section for tear resistance and lugs on inboard side for traction
- Unique synthetic/natural rubber compound for a long-wearing tread and advanced cut resistance
- High-tensile steel belt package for enhanced impact and resistance



Rim	Bias/Radial	Tire Size	Comp	Index LR	TT/TL	Ind Code	Product Code	Material ID	Non/Skid	Weight	Rim Width & Flange
29	Radial	875/65R29	6S	2X	TL	L4	136703337	205924	72	1685	27.00-3.0

SCRAPER TIRES

RADIAL TIRES FOR SCRAPERS

- Unique compounds help combat heat buildup while operating under heavy loads and speeds up to 30 mph
- Unique tread designs offer gripping traction in snow, rain, ice, mud, rocks, shale, gravel and dirt
- Strong, heavy-duty constructions offer enhanced strength and stability over severe terrain
- Exclusive compounds offer long tread life, uniform wear, enhanced retreadability and improved fuel economy



SCRAPER APPLICATION

Choose the Goodyear® tire that offers speed, cut resistance and traction for your job.

OPERATING SPEED



GP-4D



RL-2+



TL-3A+



RT-3B



RL-3



GP-2B

TRACTION

CUT RESISTANCE

GP-2B

OUTSTANDING VALUE, SMOOTH-RIDING RADIAL TIRE FOR MULTIPLE USES IN HIGH TMPH APPLICATIONS



- Solid center rib offers good lateral traction, long wear and a smooth ride
- Open shoulder grooves offer excellent traction and self-cleaning
- Non-directional tread design for high fore and aft traction
- 100-level tread depth for cooler running in load and carry operations
- Enhanced radial construction for good stability, improved mobility, softer ride, improved treadwear and better fuel economy
- Unique high-synthetic compound for a long-wearing tread and ultra abrasion cut resistance
- High-tensile steel belt package for enhanced impact resistance



Rim	Bias/Radial	Tire Size	Comp	Index LR	TT/TL	Ind Code	Product Code	Material ID	Non/Skid	Weight	Rim Width & Flange
24	Radial	385/95R24		170E	TL	E/G/L3	152043581	134172	30	348	10.00W
25	Radial	155R25	6S	1X	TL	E/G/L3	152888070	87713	30	254	12.00-1.3
25	Radial	175R25	6S	1X	TL	E/G/L3	152524070	6072	32	337	14.00-1.5
25	Radial	205R25	6S	1X	TL	E/G/L3	155903276	6277	37	500	17.00-2.0
25	Radial	235R25	6S	1X	TL	E/G/L3	153082276	6146		678	19.50-2.5
25	Radial	235R25	4S	2X	TL	E/G/L3	153083272	6159	40	670	19.50-2.5
25	Radial	265R25	6S	1X	TL	E/G/L3	136086276	5238	45	956	22.00-3.0
25	Radial	265R25	4S	2X	TL	E/G/L3	136087272	5250	45	961	22.00-3.0
25	Radial	295R25	6S	1X	TL	E/L3	136090276	5262	48	1205	25.00-3.5
25	Radial	385/95R25		170E	TL	E/G/L3	152040069	193082	30	347	10.00-1.5
25	Radial	445/80R25		170E	TL	E/G/L3	152554069	6081	32	397	14.00-1.5
25	Radial	445/95R25		177E	TL	E/G/L3	155214214	6270	34	505	14.00-1.5
25	Radial	525/80R25		179E	TL	E/G/L3	155237286	6272	36	490	17.00-2.0
29	Radial	295R25	4S	2X	TL	E/G/L3	136093605	5302	48	1240	25.00-3.5
39	Radial	405/75R39	4S	2X	TL	E/G/L3	136075272	5224	58	3302	32.00-4.5
49	Radial	2700R49	2S	2X	TL	E3	136061266	5200	52	2326	19.5-4.0

RT-3B

A TOUGH TIRE FOR USE ON ROUGH TERRAIN

- Multiple steel belts to help save you downtime and money by resisting rock cuts and penetrations
- Wide tread width improves mobility and offers a more stable, comfortable ride
- All-steel radial construction helps resist heat damage
- Made with industry-leading compounds to help improve cost per hour and overall treadwear



Rim	Bias/Radial	Tire Size	Comp	Index LR	TT/TL	Ind Code	Product Code	Material ID	Non/Skid	Weight	Rim Width & Flange
25	Radial	175R25	6S	1X	TL	E/G/L3	152524375	209859	36	404	14.00-1.5
25	Radial	205R25	6S	1X	TL	E/G/L3	155903375	209841	41	559	17.00-2.0
25	Radial	235R25	6S	1X	TL	E/G/L3	153082375	209843	45	743	19.50-2.5
25	Radial	235R25	6S		TL	G3/L3	153082090	176768	45	743	19.50-2.5
25	Radial	265R25	6S	1X	TL	E/G/L3	136086375	209842	50	1054	22.00-3.0
25	Radial	295R25	6S	2X	TL	E/G/L3	136090358	214280	55		25.00-3.5

RL-3

SMOOTH-RIDING, MULTI-PURPOSE RADIAL TIRE FOR HIGH-SPEED APPLICATION IN MODERATE TO SEVERE UNDERFOOT CONDITIONS

- Hefty shoulder lugs for outstanding forward traction
- Rugged tread design for long, even wear
- Solid centerline section for high-torque applications for longer wear and a smooth ride
- Radial construction for improved treadwear and cooler running
- High-tensile steel belt package for enhanced impact and cut resistance



Rim	Bias/Radial	Tire Size	Comp	Index LR	TT/TL	Ind Code	Product Code	Material ID	Non/Skid	Weight	Rim Width & Flange
29	Radial	24.5R29	4S	2X	TL	E3	136092929	5290	47	1640	25.00-3.5

TL-3A+

125-LEVEL, RADIAL TIRE DESIGN WITH 25% MORE TREAD DEPTH FOR SUPERIOR TRACTION AND RIDE IN SOFT SOIL AND LOOSE UNDERFOOT CONDITIONS



- Computer-engineered lug design helps reduce vibration and offer excellent traction
- 125-level tread depth, 25% deeper than standard E-3, for long wear, greater cut resistance and enhanced traction
- Ultra-wide tread arc width helps provide enhanced forward and lateral traction and flotation
- Open tread design helps promote self-cleaning
- Non-directional tread design for high traction in both fore and aft directions
- Radial construction helps provide improved mobility and flotation, softer ride, enhanced treadwear and better fuel economy
- Unique synthetic/natural rubber material for a long-wearing tread, advanced cut-resistant tread and sidewalls resistant to ozone cracking
- High-tensile steel belt package for enhanced impact resistance



Rim	Bias/Radial	Tire Size	Comp	Index LR	TT/TL	Ind Code	Product Code	Material ID	Non/Skid	Weight	Rim Width & Flange
25	Radial	175R25	6S	C1	TL	E/G/L3	155908351	208582	45	818	14.00-1.5
25	Radial	205R25	6S	C1	TL	E/G/L3	155906351	208581	51	818	17.00-2.0
25	Radial	235R25	6S	C1	TL	E/G/L3	153097059	207768	54	690	19.50-2.5
25	Radial	265R25	4S	2X	TL	E3	136087060	165259		1107	22.00-3.0
25	Radial	265R25	6S	2X	TL	E3	136087244	201623		1112	22.00-3.0
25	Radial	265R25	6S	C1	TL	E/G/L3	136084244	206924	59	1112	22.00-3.0
25	Radial	295R25	4S		TL	E3	136093060	201612		1481	25.00-3.5
25	Radial	295R25	6S	2X	TL	E3	136093244	201625		1482	25.00-3.5
25	Radial	295R25	6S	C1	TL	E/G/L3	136085244	206926	60	1504	25.00-3.5
25	Radial	295R25	6S	2X	TL	E/G/L3	136090465	214793	60	1556	25.00-3.5

RL-2+

UNIQUE 125-LEVEL, RADIAL TIRE DESIGN WITH 25% MORE TREAD DEPTH, OUTSTANDING TRACTION IN SOFT SOIL AND LOOSE UNDERFOOT CONDITIONS



- Aggressive lug pattern offers superior traction
- 125-level tread depth, 25% deeper than standard E-3, for long wear, greater cut resistance and enhanced traction
- Ultra-wide tread arc width for enhanced forward and lateral traction with excellent flotation
- Open tread design for outstanding self-cleaning
- Non-directional tread design for high fore and aft traction
- Radial construction for improved mobility and flotation, softer ride, improved treadwear and better fuel economy
- Unique synthetic/natural rubber compound for a long-wearing tread, advanced cut resistance and sidewalls resistant to ozone cracking
- High-tensile steel belt package for enhanced impact resistance



Rim	Bias/Radial	Tire Size	Comp	Index LR	TT/TL	Ind Code	Product Code	Material ID	Non/Skid	Weight	Rim Width & Flange
25	Radial	175R25	6S		TL	L2	152524374	6075	45	395	14.00-1.5
25	Radial	205R25	4S		TL	E2	155904443	6291	50	573	17.00-2.0
25	Radial	205R25	6S		TL	L2	155903444	6282	50	541	17.00-2.0
25	Radial	235R25	6S	1X	TL	E2/G2/L2	153082444	6152	53	780	19.50-2.5
25	Radial	235R25	6S	C1	TL	E/G/L3	153097930	207767	53	807	19.50-2.5
25	Radial	265R25	6S	1X	TL	L2	136086444	5244	56	1101	22.00-3.0
25	Radial	265R25	4S	2X	TL	E2	136087443	5256	56	1104	22.00-3.0
25	Radial	295R25	6S	1X	TL	L2	136090444	5269	60	1439	25.00-3.5
29	Radial	295R29	6S	2X	TL	E3	136093599	184345	60	1527	25.00-3.5
29	Radial	295R29	4S	2X	TL	E2	136092443	5284	60	1499	25.00-3.5

GP-4D

**EXTRA 150-LEVEL TREAD DEPTH/100-LEVEL OD,
ENHANCED TRACTION RADIAL FOR USE ON
ARTICULATED DUMP TRUCKS**



- 150-level tread depth for enhanced mud and soft soil traction and extended tread life
- 100-level OD for no interference on tandem axles
- Centerline riding lugs for good lateral traction, long wear and smooth ride
- Available in 65-Series profile and selected wide base sizes for high flotation, improved stability and reduced ground pressure
- Ultra-wide tread arc width for added sidewall protection, greater flotation and traction and longer tread life
- Non-directional tread design for high fore, aft and lateral traction
- Open shoulder grooves for excellent traction and self-cleaning tread design
- Radial construction for good mobility and flotation, softer ride, improved treadwear and better fuel economy
- Unique synthetic/natural rubber compound for a long-wearing tread and advanced cut resistance
- High-tensile steel belt package for enhanced impact resistance



Rim	Bias/Radial	Tire Size	Comp	Index LR	TT/TL	Ind Code	Product Code	Material ID	Non/Skid	Weight	Rim Width & Flange
25	Radial	205R25	6S	C1	TL	E/L4	136706343	208321	66	1569	17.00-2.0
25	Radial	235R25	6S	C1	TL	E/L4	153097928	208373	71	850	19.50-2.5
25	Radial	265R25	6S	C1	TL	E/L4	136084928	209148	69	1198	22.00-3.0
25	Radial	295R25	6S	2X	TL	E/L4	136090357	214279	72	1522	25.00-3.5
25	Radial	265R25	6S	2X	TL	E/L4	136087095	176202	69	1198	22.00-3.0

INDUSTRY HANDLING

Goodyear's selection of radial and bias tires help to enhance the efficiency of industry handling applications in and around ports, harbors and other job sites. Offering outstanding strength, resistance to cuts and snags and long tread life, Goodyear industry handling tires help reduce downtime and lower your cost of operation.

RADIAL SELECTION – PORT AND CONTAINER APPLICATION

- Offers strong performance for container handlers, reach stackers, straddle carriers, gantry cranes and other similar equipment
- Strong, reinforced sidewalls help resist cuts and snags in harsh operating environments
- Offers outstanding cut and puncture resistance and enhanced retreadability
- Enlarged beads offer outstanding stability, especially in high-reach situations
- Large, rectangular footprints help reduce unit ground pressure for superb mobility

BIAS SELECTION – INDUSTRIAL APPLICATION

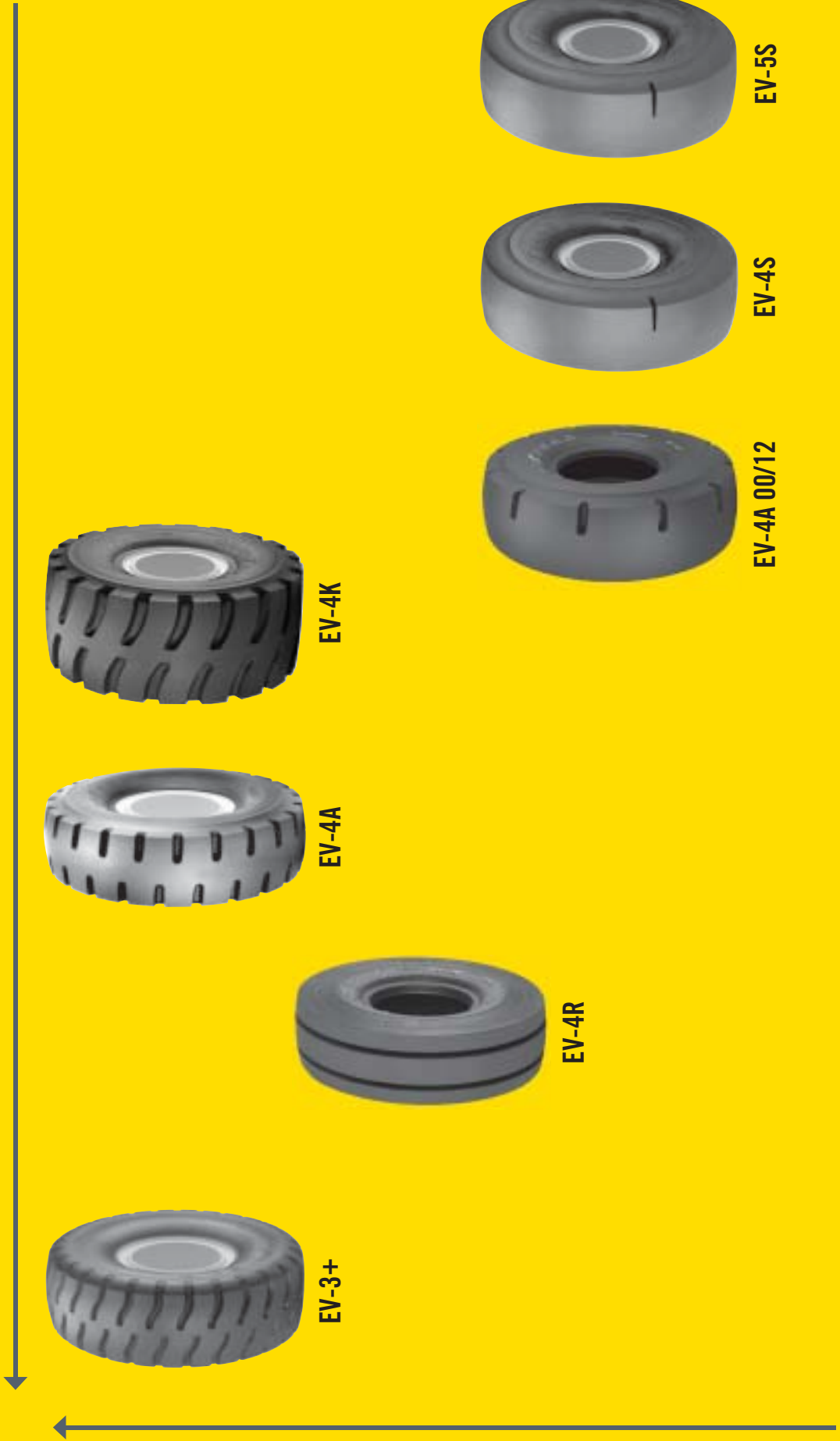
- Goodyear's advanced bias-ply construction offers outstanding dampening and stability in lifting mode
- Large bead areas, far above industry standards, lessen side sway for steady performance
- Thick, tough sidewalls help resist punctures and extend tread life while offering the ability to support heavy loads



RADIAL SELECTION – PORT AND CONTAINER APPLICATION

Choose the Goodyear® tire that offers speed and traction for your job.

OPERATING SPEED



BIAS SELECTION – INDUSTRIAL APPLICATION

Choose the Goodyear tire that offers speed and traction for your job.

OPERATING SPEED



TRACTION



ELV-3A



ELV-4B



HRL-3A



SGLD L2A



WRL-3A



UMS-3A



SRB-7A



ELV-4D



ELV-5D

EV-3+

PREMIUM, 125-LEVEL RADIAL PORT TIRE WITH OUTSTANDING TRACTION

- Oversized, high-strength bead bundle, 25% larger than a standard haulage tire, offers increased stability required for high loads and high inflation
- 125-level tread depth, 25% deeper than standard IND-3, for longer wear, enhanced traction and greater cut resistance
- Sidewall insert for increased stability and resistance to cuts and snags
- Tough casing for enhanced retreadability and lower cost per hour
- Radial construction for reduced ground pressure, softer ride, improved treadwear and better fuel economy
- Steel belted for enhanced retreadability and increased puncture resistance
- Unique synthetic/natural rubber compound for a long-wearing tread and advanced tear resistance

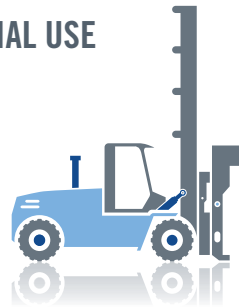


Rim	Bias/Radial	Tire Size	Comp	Index LR	TT/TL	Ind Code	Product Code	Material ID	Non/Skid	Weight	Rim Width & Flange
25	Radial	1600R25		3X	TL	IND3	155426424	138013	50	600	11.25-2.0
25	Radial	1800R25		3X	TL	IND3	153883424	108837	53	885	13.00-2.5
33	Radial	1800R33		3X	TL	IND3	153451424	112630	53	1128	13.00-2.5

EV-4R

NEW RADIAL TIRE FOR CONTAINER HANDLING AND INDUSTRIAL USE

- Extra strong radial carcass for heavy loads
- Superior stability
- Unique tread compound for improved treadwear and cost per hour



Rim	Bias/Radial	Tire Size	Comp	Index LR	TT/TL	Ind Code	Product Code	Material ID	Non/Skid	Weight	Rim Width & Flange
25	Radial	1600R25		3X	TL	IND4	155025491	214910	63	749	11.25-2.0
25	Radial	480/95R25			TL	IND	155046491	222932		709	13.00-2.5

EV-4A

150-LEVEL TRACTION RADIAL TIRE WITH SLOTTED SHOULDER SEGMENTS FOR USE ON PORT AND CONTAINER HANDLING EQUIPMENT

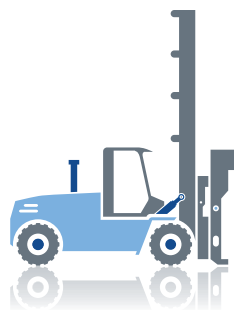
- Oversized, high-strength bead bundle, 25% larger than a standard haulage tire, for increased stability required for high loads and high inflation
- Sidewall insert for increased stability and resistance to cuts and snags
- 150-level tread depth, 50% deeper than standard IND-3, for longer wear, greater cut resistance and enhanced traction
- Unique synthetic/natural rubber compound for a long-wearing tread and advanced tear resistance
- Radial construction for reduced ground pressure, softer ride, improved treadwear and better fuel economy
- Steel belted for enhanced retreadability and increased puncture resistance



Rim	Bias/Radial	Tire Size	Comp	Index LR	TT/TL	Ind Code	Product Code	Material ID	Non/Skid	Weight	Rim Width & Flange
24	Radial	1400R24	4S	3X	TT	IND4	152714617	187410	49	450	10.00W
25	Radial	1600R25		3X	TL	IND4	155023260	204033	58	736	11.25-2.0
25	Radial	1600R25		3X	TL	IND4	155426007	138008	58	699	11.25-2.0
25	Radial	1600R25		3X	TL	IND4	155021338	207753		711	11.25-2.0
25	Radial	480/65R25		3X	TL	IND4	155002295	204418	59	709	

EV-4K

150-LEVEL TRACTION RADIAL TIRE FOR USE IN PORT AND HANDLING APPLICATIONS WITH ENHANCED BEAD AND SIDEWALL CONSTRUCTION FOR OUTSTANDING STABILITY AND DRIVER CONFIDENCE



- Oversized, high-strength bead bundle, 25% larger than a standard haulage tire, for increased stability required for high loads and high inflation
- Sidewall insert for increased stability and resistance to cuts and snags
- Available in multiple lug configurations including 08/08 (8 lugs per side) for increased wear and 24/24 (24 lugs per side) for maximum traction
- 150-level tread depth, 50% deeper than standard IND-3, for long wear, greater cut resistance and enhanced traction
- Unique synthetic/natural rubber compound for a long-wearing tread and advanced tear resistance
- Radial construction for reduced ground pressure, softer ride, improved treadwear and better fuel economy
- Steel belted for enhanced retreadability and increased puncture resistance

Rim	Bias/Radial	Tire Size	Comp	Index LR	TT/TL	Ind Code	Product Code	Material ID	Non/Skid	Weight	Rim Width & Flange
25	Radial	1800R25		3X	TL	IND4	153883455	122814	68	988	13.00-2.5

Also available in 12/12 size.

EV-4S

150-LEVEL, SMOOTH RADIAL TIRE FOR USE IN PORT AND HANDLING APPLICATIONS WITH ENHANCED BEAD AND SIDEWALL CONSTRUCTION FOR OUTSTANDING STABILITY AND DRIVER CONFIDENCE

- Oversized, high-strength bead bundle, 25% larger than a standard haulage tire, for increased stability for high loads and high inflation
- Sidewall insert for increased stability and resistance to cuts and snags
- 150-level tread depth, 50% deeper than standard IND-3, for long wear, greater cut resistance and enhanced traction
- Unique synthetic/natural rubber compound for a long-wearing tread and advanced tear resistance
- Radial construction for reduced ground pressure, softer ride, improved treadwear and better fuel economy
- Steel belted for enhanced retreadability and increased puncture resistance
- Smooth tread design offers a lower cost per hour and longer wear



Rim	Bias/Radial	Tire Size	Comp	Index LR	TT/TL	Ind Code	Product Code	Material ID	Non/Skid	Weight	Rim Width & Flange
24	Radial	1400R24		3X	TT	IND4S	152714470	122817	49	516	10.00W
25	Radial	1600R25		3X	TL	IND4S	155426440	122811	65	718	11.25-2.0
25	Radial	1800R25	4S	3X	TL	IND4S	153883421	109007	68	1068	13.00-2.5
33	Radial	1800R33	4S	3X	TL		153451440	136219			13.00-2.5

EV-4A 00/12

PORT SERVICE TIRE WITH SLOTTED SHOULDERS ON ONE SIDE FOR ENHANCED TRACTION

- 150-level tread depth, 50% deeper than standard IND-3, for longer wear, greater cut resistance and enhanced traction
- Oversized, high-strength bead bundle, 25% larger than a standard haulage tire for increased stability for high loads and high inflation
- Radial construction for reduced ground pressure, softer ride and improved treadwear
- Sidewall insert for increased stability and resistance to cuts and snags
- Enhanced retreadability and enhanced puncture resistance



Rim	Bias/Radial	Tire Size	Comp	Index LR	TT/TL	Ind Code	Product Code	Material ID	Non/Skid	Weight	Rim Width & Flange
24	Radial	1400R24	4S	3X	TT	IND4	152714617	187410	49	450	10.00W
25	Radial	1600R25		3X	TL	IND4	155023260	204033	58	736	11.25-2.0
25	Radial	1600R25		3X	TL	IND4	155426007	138008	58	699	11.25-2.0
25	Radial	1600R25		3X	TL	IND4	155021338	207753		711	11.25-2.0
25	Radial	480/65R25		3X	TL	IND4	155002295	204418	59	709	

EV-5S

250-LEVEL, SMOOTH RADIAL TIRE OUTSTANDING FOR COST PER HOUR ON IMPROVED SURFACES

- 250-level tread depth, 150% deeper than standard L-3, for longer wear, superior cut resistance and enhanced traction
- Smooth tread design offers lower cost per hour and longer wear
- Oversized, high-strength bead bundle, 25% larger than a standard haulage tire, for increased stability for high loads and high inflation
- Sidewall insert for increased stability and resistance to cuts and snags
- Radial construction for reduced ground pressure, softer ride, improved treadwear and better fuel economy
- Enhanced retreadability and enhanced puncture resistance
- Unique synthetic/natural rubber compound for a long-wearing tread and advanced tear resistance

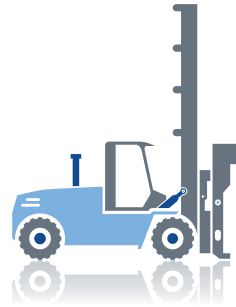


Rim	Bias/Radial	Tire Size	Comp	Index LR	TT/TL	Ind Code	Product Code	Material ID	Non/Skid	Weight	Rim Width & Flange
25	Radial	1600R25	4S	3X	TL		155426026	153749		600	11.25-2.0
25	Radial	1800R25	4S	3X	TL	IND5S	153883459	91705	99	1135	13.00-2.5
25	Radial	1800R25	5S	3X	TL	IND5	153883147	165072		1202	13.00-2.5

PVG-7A

BIAS RIB TIRE FOR PAVERS

- Special rib tire built for pavers
- Strong carcass and special compound for long wear in paving applications

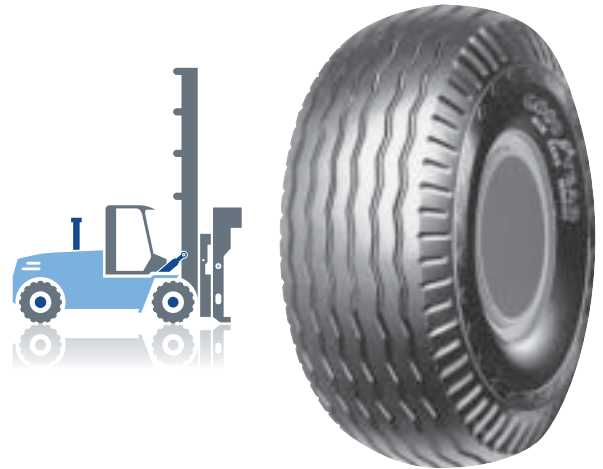


Rim	Bias/Radial	Tire Size	Comp	Index LR	TT/TL	Ind Code	Product Code	Material ID	Non/Skid	Weight	Rim Width & Flange
24	Bias	1600-24TG	4S	12	TL	G7	125493261	4767	15	288	10.00VA

SRB-7A

BIAS RIB TIRE FOR USE IN SANDY TERRAIN

- Special shallow rib design for optimized flotation in sand applications
- Tough, durable casing for full performance and value



Rim	Bias/Radial	Tire Size	Comp	Index LR	TT/TL	Ind Code	Product Code	Material ID	Non/Skid	Weight	Rim Width & Flange
21	Bias	24-21	2S	14	TL	E7	124640583	4512	12	280	18.00-1.5
25	Bias	1800-25	4S	16	TL	E7	133534596	4992	16	369	10.00-1.5
25	Bias	2100-25	4S	28	TL	E7	124578596	76156	16	510	15.00-3.0

ELV-3A

ULTIMATE VALUE BIAS TRACTION TIRE FOR GENERAL PORT SERVICE

- Oversized, high-strength bead bundle, 25% larger than a standard haulage tire, for excellent stability in lift mode required for high loads and high inflation
- Advanced bias ply construction helps resist sidewall damage and improve stability and offers excellent damping
- Tough casing for enhanced retreadability and lower cost per hour
- 100-level tread depth offers a cool-running, excellent value tire
- Unique synthetic/natural rubber compound for advanced tear resistance

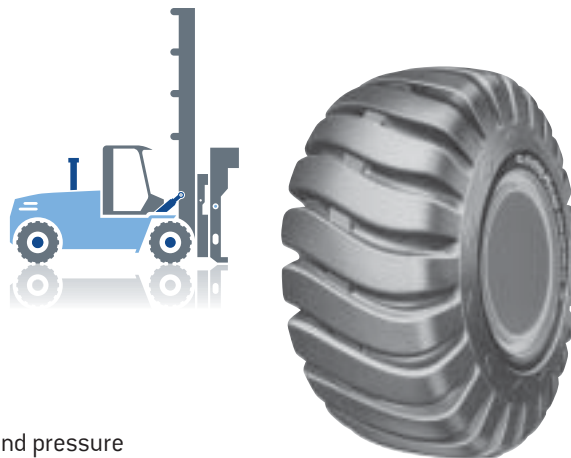


Rim	Bias/Radial	Tire Size	Comp	Index LR	TT/TL	Ind Code	Product Code	Material ID	Non/Skid	Weight	Rim Width & Flange
24	Bias	1400-24		28	TT	IND3	123250776	202659	33	335	10.00W
25	Bias	1600-25	4S	28	TL	IND3	125506014	205351	37	682	11.25-2.0
25	Bias	1600-25	4S	32	TL	IND3	125509196	189590	37	683	11.25-2.0
25	Bias	1800-25	6S	40	TL	IND3	133541519	217216	39	688	13.00-2.5
25	Bias	1800-25		32	TL	IND3	133538794	5020	39	685	13.00-2.5
25	Bias	1800-25	4S	40	TL	IND3	133540196	189594	39	688	13.00-2.5
25	Bias	2100-25		32	TL	IND3	124593794	4471	44	938	15.00-3.0

HRL-3A

WIDE-BASE BIAS ROCK TIRE FOR USE IN MODERATELY SEVERE SERVICE

- Aggressive and durable lug design for premium performance in harsh underfoot conditions
- Non-directional tread design for good fore and aft traction
- Unique synthetic/natural rubber compound for a long-wearing tread, advanced cut resistance and sidewalls resistant to ozone cracking
- Tough, durable casing for enhanced retreadability
- Wide base construction for high flotation, improved stability and reduced ground pressure



Rim	Bias/Radial	Tire Size	Comp	Index LR	TT/TL	Ind Code	Product Code	Material ID	Non/Skid	Weight	Rim Width & Flange
20	Bias	1200-20ML		16	TT	E3	123340184	4248	28	193	8.50
24	Bias	1200-24					123364184	4264		216	8.50V
24	Bias	1400-24ML		20	TT	E3	123446184	4356	33	293	10.00W
24	Bias	1400-24NHS	4S	24	TT	E3	123002005	217488	33	336	10.00W
24	Bias	1400-24NHS		28	TT	E3	123001005	217487	33	336	10.00W
25	Bias	1400-25					123455185	4375		299	10.00
25	Bias	1600-25	4S	28	TL	E3	125506575	187574	37	491	11.25-2.0
25	Bias	1600-25	4S	32	TL	E3	125509106	187918	37	528	11.25-2.0

ELV-4B

150-LEVEL BIAS PORT SERVICE TIRE FOR USE WHEN TRACTION IS REQUIRED

- Wide bead base helps provide outstanding stability
- Increased sidewall rubber gauge to help resist cuts and snags
- Reinforced casing offers improved endurance, retreadability and load carry capacity

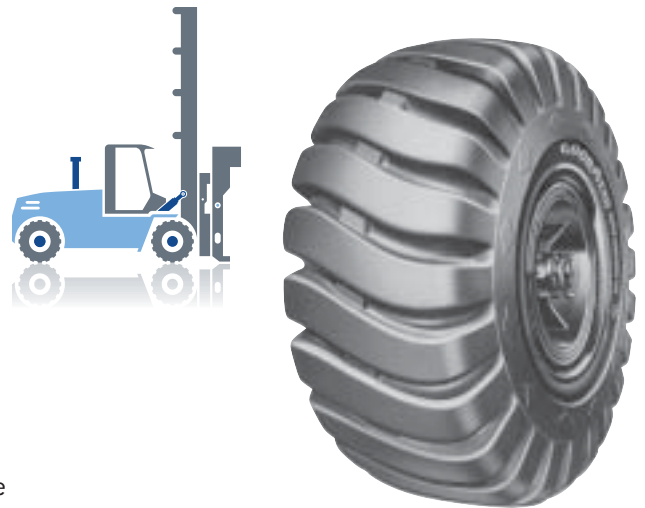


Rim	Bias/Radial	Tire Size	Comp	Index LR	TT/TL	Ind Code	Product Code	Material ID	Non/Skid	Weight	Rim Width & Flange
25	Bias	1800-25	4S	40	TL	IND4	133540487	108656	70	926	13.00-2.5
25	Bias	1800-25	6S	40	TL	IND4	133540199	189600	70	926	13.00-2.5
33	Bias	1800-33	4S	36	TL	IND4	133561487	124318	70	1062	13.00-2.5
33	Bias	1800-33	6S	36	TL	IND4	133561199	199987	70	1062	13.00-2.5
35	Bias	2100-35	4S	40	TL	IND4	124582200	189604	70	1378	15.00-3.0

WRL-3A

VALUE BIAS TRACTION TIRE FOR USE ON WALL CARRIERS IN STEEL MILLS AND OTHER HARSH ENVIRONMENTS

- Oversized, high-strength bead bundle, 25% larger than a standard haulage tire, for excellent stability for high loads and high inflation
- Advanced bias-ply construction helps resist sidewall damage, improves stability and offers excellent damping
- Tough casing for enhanced retreadability and lower cost per hour
- 100-level tread depth for a cool-running, excellent value tire
- Unique synthetic/natural rubber compound for advanced tear resistance



Rim	Bias/Radial	Tire Size	Comp	Index LR	TT/TL	Ind Code	Product Code	Material ID	Non/Skid	Weight	Rim Width & Flange
20	Bias	1400-20NHS		24	TT	E3	123428645	4317	34	317	10.00W
24	Bias	1400-24NHS		24	TT	E3	123447645	4362	33	344	10.00W
24	Bias	1400-24NHS		28	TT	E3	123003006	220218	33	366	10.00W
24	Bias	1400-24NHS		28	TT	E3	123448645	4370	33	366	10.00W

SGLD L2A

TIME-TESTED BIAS TRACTION TIRE FOR USE ON FRONT END LOADERS AND MOTOR GRADERS IN VARIED APPLICATIONS

- Precision angled bars for optimized traction in soft soil
- Open shoulder grooves for outstanding traction, less slippage and superior self-cleaning
- Unique synthetic/natural rubber compound for a long-wearing tread, advanced cut resistance and sidewalls that help resist ozone cracking
- Tough casing for enhanced retreadability



Rim	Bias/Radial	Tire Size	Comp	Index LR	TT/TL	Ind Code	Product Code	Material ID	Non/Skid	Weight	Rim Width & Flange
25	Bias	155-25					123887458	4411		169	12.00-1.3
25	Bias	155-25		12	TL	E/G/L2	123894463	187519	30	177	12.00-1.3
25	Bias	175-25		12	TL	E/G/L2	123897463	187578	31	217	14.00-1.5
25	Bias	175-25		16	TL	E/G/L2	123876458	4389	31	254	14.00-1.5
25	Bias	175-25		20	TL	E/G/L2	123877458	4401	31	269	14.00-1.5

UMS-3A

GENERAL PURPOSE DESIGN FOR MEDIUM-SIZE UNDERGROUND MINE EQUIPMENT

- Aggressive and durable lug design for premium performance in harsh underfoot conditions
- Non-directional tread design for good fore and aft traction
- Unique synthetic/natural rubber compound for long-wearing tread and advanced cut resistance
- Tough casing for enhanced retreadability
- Wide base construction offers high flotation, improved stability and reduced ground pressure



Rim	Bias/Radial	Tire Size	Comp	Index LR	TT/TL	Ind Code	Product Code	Material ID	Non/Skid	Weight	Rim Width & Flange
20	Bias	1200-20NHS	6S	20	TT		123342842	4255	28	223	8.50
20	Bias	1200-20	6S	24	TT		123343842	177313	28	243	8.50
20	Bias	1200-20NHS	6S	28	TT		123251842	181223	28	253	8.50
20	Bias	1400-20NHS	6S	24	TT		123428842	4320	33	320	10.00W
20	Bias	1400-20NHS	6S	28	TT		123252842	177314	33	356	10.00W
20	Bias	1400-20	6S	32	TT		123250842	185490	33	380	10.00W
24	Bias	1400-24NHS	6S	28	TT		123448842	115299	33	407	10.00W
24	Bias	1200-24NHS	6S	16	TT		123364842	4268	28	237	8.50V

ELV-4D

150-LEVEL SMOOTH BIAS TIRE FOR OUTSTANDING WEAR IN PORT AND HANDLING APPLICATIONS WITH ENHANCED BEAD AND SIDEWALL CONSTRUCTION FOR OUTSTANDING STABILITY AND DAMPING

- Smooth tread design offers lower cost per hour and longer wear
- Oversized, high-strength bead bundle for outstanding stability in lift mode for high loads and high inflation to improve tire life
- 150-level tread depth, 50% deeper than standard IND-3, for long wear, greater cut resistance and enhanced traction
- Advanced bias-ply construction helps resist sidewall damage, improves stability and offers outstanding damping
- Tough casing for enhanced retreadability and lower cost per hour
- Unique synthetic/natural rubber compound for advanced tear resistance

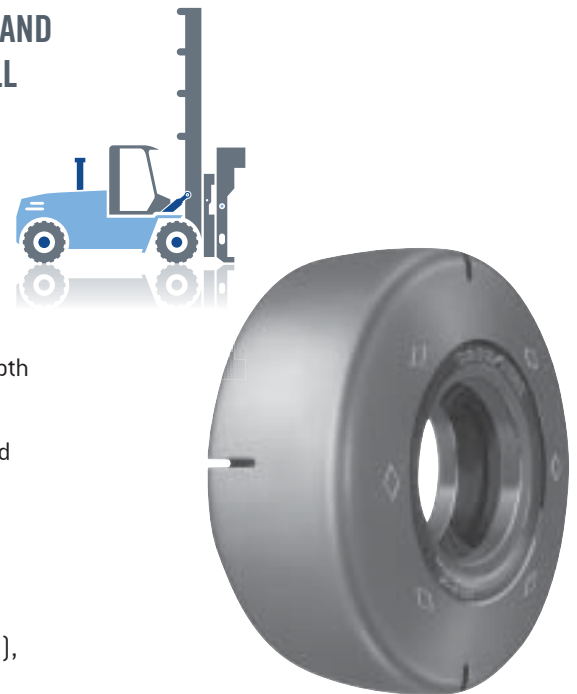


Rim	Bias/Radial	Tire Size	Comp	Index LR	TT/TL	Ind Code	Product Code	Material ID	Non/Skid	Weight	Rim Width & Flange
25	Bias	1800-25	2S	40	TL	IND4S	133540238	200022	73	929	13.00-2.5
25	Bias	1800-25	4S	40	TL	IND4S	133540192	189580	73	1161	13.00-2.5

ELV-5D

250-LEVEL SMOOTH BIAS TIRE FOR OPTIMIZED WEAR IN PORT AND HANDLING APPLICATIONS WITH ENHANCED BEAD AND SIDEWALL CONSTRUCTION FOR OUTSTANDING STABILITY AND DAMPING

- Smooth tread design for low cost per hour and longer wear
- Oversized, high-strength bead bundle, 25% larger than a standard haulage tire, offers outstanding stability in lift mode required for high loads and high inflation to improve tread life
- 250-level tread depth, 150% deeper than standard L-3, for the deepest tread depth available for maximum wear
- Advanced bias-ply construction resists sidewall damage, improves stability and offers excellent damping
- Tough casing for enhanced retreadability and lower cost per hour
- Unique synthetic/natural rubber compound for enhanced tear resistance
- Available in multiple tread contours including 21.00-25 ELV-5A (convex contour), 18.00-25 ELV-5C (flat contour) and 18.00-25 ELV-5D (concave contour)



Rim	Bias/Radial	Tire Size	Comp	Index LR	TT/TL	Ind Code	Product Code	Material ID	Non/Skid	Weight	Rim Width & Flange
25	Bias	1800-25	4S	40	TL	IND5S	133540141	121511	106	1208	13.00-2.5



GOODYEAR
MORE DRIVEN.

Hotline 1-800-227-9531 / goodyearotr.com